

DJC.4

USER MANUAL



stanton

IMPORTANT SAFETY INSTRUCTIONS



CAUTION: THE LIGHTNING FLASH WITH AN ARROWHEAD SYMBOL WITHIN AN EQUILATERAL TRIANGLE IS INTENDED TO ALERT THE USER TO THE PRESENCE OF UN-INSULATED DANGEROUS VOLTAGE WITHIN THE UNITS ENCLOSURE THAT MAY BE OF SUFFICIENT MAGNITUDE TO CONSTITUTE A RISK OF ELECTRIC SHOCK TO PERSONS.



WARNING: THE EXCLAMATION POINT WITHIN AN EQUILATERAL TRIANGLE IS INTENDED TO ALERT THE USER TO THE PRESENCE OF IMPORTANT OPERATING AND MAINTENANCE (SERVICING) INSTRUCTIONS IN THE LITERATURE ACCOMPANYING THE PRODUCT.



NOTE: THE HAND WITHIN AN EQUILATERAL TRIANGLE IS INTENDED TO ALERT THE USER TO SPECIFIC GUIDANCE AND INFORMATION REGARDING THE OPERATION OF THE UNIT, ND SHOULD BE READ FULLY BEFORE USING THE UNIT FOR THE FIRST TIME.



CAUTION: TO REDUCE THE RISKS OF FIRE OR ELECTRIC SHOCK DO NOT REMOVE ANY COVERS, OR OPEN THE UNIT. THERE ARE NO USER-SERVICABLE PARTS INSIDE. ALL SERVICING SHOULD BE REFERRED TO QUALIFIED SERVICE ENGINEERS.



WARNING: READ AND FOLLOW ALL THE SAFETY AND OPERATING INSTRUCTIONS BEFORE CONNECTING OR USING THIS UNIT. RETAIN THIS USER MANUAL FOR FUTURE REFERENCE. ALL WARNINGS ON THE UNIT AND ITS PACKAGING SHOULD BE READ AND FOLLOWED.



WARNING: This product contains a chemical known to the State of California to cause cancer and birth defects or other reproductive harm.



CAUTION: To reduce the risks of fire or electric shock do not expose this product to rain or moisture. Do not use this product near water; for example, near a bath tub, washbowl, kitchen sink, laundry tub, in a wet basement or near a swimming pool. Unplug the unit from the wall outlet before cleaning. Never use thinner, cleaning fluids, solvents or chemically impregnated cloths. For cleaning always use a soft dry cloth. Unplug this product during lightning storms or when unused for long periods of time.



CAUTION: The unit should be installed so that its location or position does not interfere with its proper ventilation. For example, it should not be situated on a bed, sofa, rug or similar surface that may block the ventilation openings; or placed in a built-in installation, such as a bookcase or cabinet, that may impede the flow of air through its ventilation openings. The unit should be situated from heat sources such as radiators, heat registers, stoves or other devices (including amplifiers) that produce heat. No naked flame sources, such as lighted candles, should be placed on, or near the unit.



WARNING: Do not place this unit on an unstable surface, cart, stand or tripod, bracket or table. The unit may fall, causing serious injury to a child or adult and serious damage to the unit. Use only with a cart, stand, tripod, bracket or table recommended by the manufacturer or sold with the unit. Any mounting of the device on a wall or ceiling should follow the manufacturer's instructions and should use a mounting accessory recommended by the manufacturer. An appliance and cart combination should be moved with care. Quick stops, excessive force and uneven surfaces may cause the appliance and cart combination to overturn. Use only with the cart, stand, tripod, bracket, or table specified by the manufacturer, or sold with the apparatus. When a cart is used, use caution when moving the cart/apparatus combination to avoid injury from tip-over.



NOTE: Should the unit become damaged beyond repair, or reaches the end of its life, please consult the regulations regarding disposal of electronic products in your region.



NOTE: S tanton Magnetics cannot be held responsible for damage, and, or including data loss caused by improper use of the unit and or the applications provided for use with the unit.

IMPORTANT SAFETY INSTRUCTIONS



CAUTION TO PREVENT ELECTRIC SHOCK, MATCH WIDE BLADE OF PLUG TO WIDE SLOT FULLY INSERT.

ENGLISH: The apparatus shall be connected to a Mains socket outlet with a protective earthing connection.

GERMAN: Das Gerät ist eine Wandsteckdose mit einem Erdungsleiter angeschlossen werden.

FRENCH: L'appareil doit être connecté à une prise secteur avec connexion à la terre.

SPANISH: El aparato estará conectado a una toma de red eléctrica con una conexión a tierra.

ITALIAN: L'apparecchio deve essere collegato a una presa di rete con una connessione a terra protettiva.



1. The unit and power supply should only be connected to a power supply outlet only of the voltage and frequency marked on its casing.
2. Protect the power cable from being walked on or pinched particularly at plugs, convenience receptacles, and the point where they exit from the apparatus.
3. Do not defeat the safety purpose of the polarized or grounding-type plug. A polarized plug has two blades with one wider than the other. A grounding type plug has two blades and a third grounding prong. The wide blade or the third prong is provided for your safety. If the provided plug does not fit into your outlet, consult a qualified electrician for replacement of the obsolete outlet.
4. If the mains plug supplying this product incorporates a fuse then it should only be replaced with a fuse of identical or lower rupture value.
5. Never use a damaged or frayed power cable; this can introduce serious risk of exposing lethal voltages.
6. The power supply cable of the unit should be unplugged from the wall outlet when it is to be unused for a long period of time.
7. Only use attachments/accessories specified by the manufacturer.



DO NOT ATTEMPT SERVICING OF THIS UNIT YOURSELF. REFER SERVICING TO QUALIFIED SERVICE PERSONNEL.

Upon completion of any servicing or repairs, request the assurance that only Factory Authorized Replacement Parts with the same characteristics as the original parts have been used, and that the routine safety checks have been performed to guarantee that the equipment is in safe operating condition.



REPLACEMENT WITH UNAUTHORIZED PARTS MAY RESULT IN FIRE, ELECTRIC SHOCK OR OTHER HAZARDS.

ATTENTION POUR ...VITER LES CHOC ELECTRIQUES, INTRODUIRE LA LAME LA PLUS LARGE DE LA FICHE DANS LA BORNE

CORRESPONDANTE DE LA PRISE ET POUSSER JUSQU'AU FOND.



This unit should be serviced by qualified service personnel when:

- The power cord or the plug has been damaged
- Objects have fallen, or liquid has been spilled into the unit
- The unit has been exposed to rain or liquids of any kind
- The unit does not appear to operate normally or exhibits a marked change in performance
- The device has been dropped or the enclosure damaged.

REGULATORY CERTIFICATION

Stanton Magnetics declare under our sole responsibility that this product, to which this declaration relates, is in conformity with the following standards:



The Declarations of Conformity can be obtained from 382 Ave. de la Couronne, B-1050 Brussels
Authorized European representative: Phone: +3226450500 Fax: +326450505

Features

Thank you for purchasing your new DJC.4 MIDI controller! The DJC.4 comes bundled with a four-deck version of Virtual DJ® LE, which allows users to scratch and mix four decks of audio as well as control video. Its built-in audio interface allows users to integrate turntables or CD decks into their performance. The control surface of the DJC.4 features large, touch-sensitive jog wheels, offering users extremely tight scratch and pitch bend control.

Setup of the DJC.4 is easy. Users simply plug in the included USB cable, start up Virtual DJ LE and go. The one-to-one mapping makes for a plug-in-and-play, out-of-the-box solution that eliminates all guesswork. The DJC.4 also includes shift functionality on all buttons and encoders, ensuring future equipment and functionality can be added with ease.

Inputs: Line/Phone x 2 (RCA), MIC x 2, Aux x 1, USB type x 2

Outputs: Master x 2, Headphone x 2

3 band EQ with Full output kill function for each channel

MP3 player/tablet friendly Aux input

MIC input

Headphone with level control and cue mixing

Dual headphone jacks (1/4" and 3.5mm)

Dual 10 LED monitor display

DVS direct mode for timecode DJing software

Touch-sensitive jog wheels

Jog wheels sensor adjust knobs for each wheel

Installing ASIO Driver (Windows Only)

Before you can use your DJC.4 with a Windows PC, you need to install the ASIO driver. This can be found on the Stanton software support CD. The ASIO lower latency to under 10 ms. You can configure the driver's settings using the Control Panel window.

PC SYSTEM REQUIREMENTS (Minimum system requirements):

- Intel Pentium II 450MHz CPU or comparable AMD CPU(recommend at least a Pentium III CPU with 600M MHz) .
- Windows 98SE, ME, 2000, XP, Vista and Windows 7 operating system
- 1 available USB port
- At least 128MB RAM
- Software applications with ASIO support

Specifications

1. GENERAL SECTION

POWER : DC6V, 2.0A

DIMENSION : 410 (W) X 297 (D) X 65 (H) mm

WEIGHT : 2.9 kg

2. INPUT/OUTPUT IMPEDANCE & SENSITIVITY: (MAXIMUM GAIN, load=100K)

INPUT IMPEDANCE AND REFERENCE INPUT LEVEL

LINE:	47K OHM /0dBV
PHONO:	47K OHM /-50dBV
MIC:	10K OHM /-54dBV
AUX:	47K OHM /0dBV

OUTPUT IMPEDANCE

MASTER:	300 OHM
BALANCED:	600 OHM
PHONES (load=32 ohm):	10 OHM

3. FREQUENCY RESPONSE: (MASTER GAIN MAX., MASTER OUT 0dB)

LINE:	20-20KHz +/-3dB
AUX:	20-20KHz +/-3dB
PHONO:	20-20KHz +/-3dB (RIAA) (MASTER OUT -14dB)
MIC:	20-20KHz +/-3dB

4. THD + N: (MASTER GAIN MAX., MASTER OUT 0dB, w/ 20kHz LPF, A-WEIGHTED)

LINE:	LESS THAN 0.05% @ 1KHz
AUX:	LESS THAN 0.05% @ 1KHz
PHONO:	LESS THAN 0.15% @ 1KHz
MIC:	LESS THAN 0.15% @ 1KHz

5. MAXIMUM INPUT: (MASTER GAIN MAX., 1KHz, THD=1%, w/20kHz LPF, A-WEIGHTED)

LINE:	MORE THAN +6dBV
AUX:	MORE THAN +6dBV
PHONO:	MORE THAN -30dBV
MIC:	MORE THAN -35dBV

6. MAXIMUM OUTPUT: (MASTER GAIN MAX., 1KHz, THD=1%, w/20kHz LPF, A-WEIGHTED)

MASTER:	MORE THAN +6dBV (2V)
---------	----------------------

7. SIGNAL TO NOISE RATIO: (MASTER GAIN MAX., MASTER OUT 0dB, w/20kHz LPF, A-WEIGHTED)

LINE:	MORE THAN 80dB
AUX:	MORE THAN 80dB
PHONO:	MORE THAN 80dB
MIC:	MORE THAN 75dB

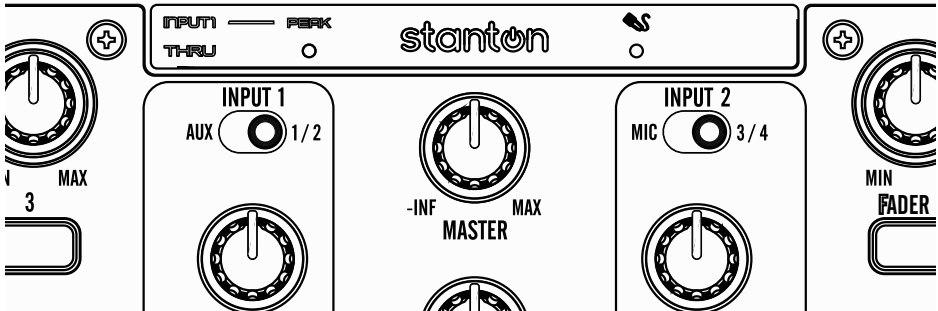
8. LR SEPARATION: (MASTER GAIN MAX., MASTER OUT 0dB, w/ 20kHz LPF, A-WEIGHTED)

LINE:	MORE THAN 70dB
AUX:	MORE THAN 70dB
PHONO:	MORE THAN 70dB

9. CHANNEL BALANCE:

WITHIN 2dB

Controls and Functions



1. **Input 1 LED**
Indicates when INPUT 1 THRU is active. When the INPUT 1 over 2V the PEAK LED will light.
2. **Mic LED**
Indicates the MIC is active.
3. **Input 1 Source Switch**
Switches between AUX or LINE/PHONO.
4. **Input 2 Source Switch**
Switches between MIC or LINE/PHONO2.
5. **Master Volume Control**
This rotary knob is used to control the master output level (volume). To avoid distorted output try to keep this knob as low as possible.

To avoid speaker damage that may be caused by excessive volume, be sure to turn the Master Volume Control knob to 0 before turning on your DJC.4.



1. **Mic Input Jack**
For plugging in a dynamic microphone.
2. **Mic Level**
Adjusts microphone volume input level.
3. **Mic ON/OFF**
Turns microphone ON/OFF.
4. **Touch Sensor Level**
Adjusts the static sensitivity of the platters on your DJC.4. If you are having trouble with touch sensitivity, you can turn these knobs up. If you are having troubles with the platters detecting a touch without actually touching the platter, you can turn this knob down. To disable touch sensitivity entirely, you can turn this knob all the way to the LEFT side.
5. **X Fader Curve**
Used to select the speed at which the volume raises/lowers depending on crossfader position.
When the knob is set to the **LEFT** side, you will have a more gradual volume increase/decrease.
When the knob is set to the **RIGHT**, you will hear the other

song come in very rapidly.

6. **Mixing Mode Selector**
This function allows you to monitor the CUE level as well as the MASTER output in your headphones. In software that provides a SPLIT CUE option, this provides a volume control for the LEFT and RIGHT side of your headphones (CUE AND MASTER).
7. **Cue Level**
This knob is used to adjust the headphone output level.
8. **Headphone Jack**
These jacks are used to connect your headphones to the DJC.4, allowing you to monitor your mix. They can be used simultaneously for lessons or tag-team DJing.

Always be sure the CUE LEVEL VOLUME is set to minimum before you put your headphones on.

Controls and Functions



- 1. Power Connector**

A DC adaptor can be used when the USB port cannot provide enough power to the unit. Please use only a 6V DC adaptor.
- 2. ON/OFF Switch**

Turns the DJC.4 ON/OFF.
- 3. USB Port**

Connects your DJC.4 to your computer for both audio and power.
Note: maximum USB cable length is 3 meters.
- 4. Balanced TRS Master Output Jack**

For connection to a professional amplifier or mixing console with a balanced input.
- 5. Master Output (RCA) Jack**

For connection to a consumer-level speaker system.
- 6. PH/LN Input Jack**

These jacks are inputs for a phono (RIAA) stage for magnetic (MM) cartridge or a line level device.
- 7. PH/LN Selector Switch**

These switches are used to change the voltage line levels of the respected PHONO/LINE RCA inputs jacks. When connecting turntables with magnetic cartridges to these jacks be sure the corresponding switch is in the "PHONO" position, and when using line level input devices be sure the switch is in the "LINE" position.
- 8. GND(Ground Terminal)**

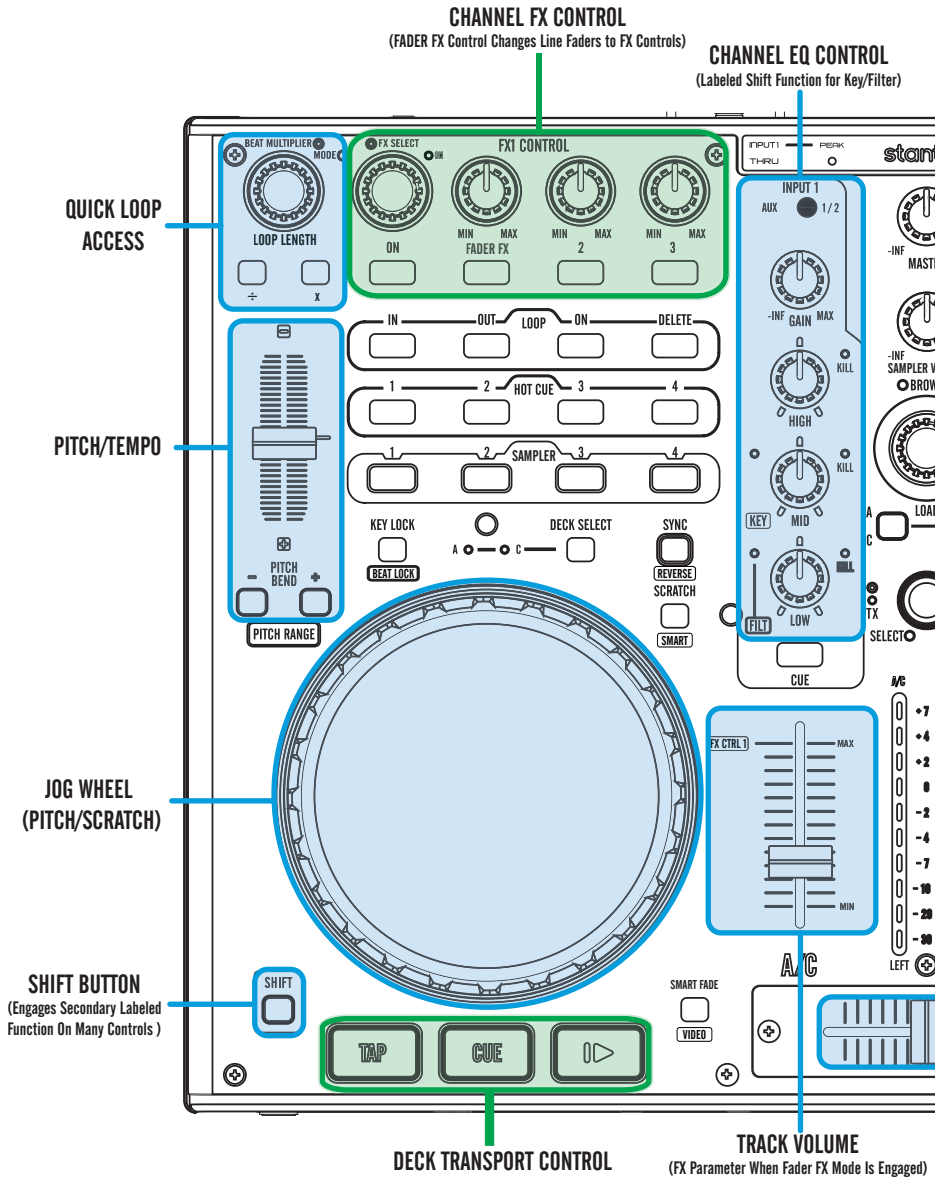
For turntable connection. Always use this connection when using standard turntables with ground cable.
- 9. PH/THRU Switch**

Send the AUX or LN/PH 1 signals directly to the master out and disconnects the computer output.
Select the AUX or LN/PH1 from the Input 1 selection.
- 10. AUX IN**

CD players, MP3 Player, Tablet Pad and other line level instruments may only be connected to this jack. Input volume will be controlled by the channel fader. The channel SOURCE SELECTOR SWITCH must be in the "AUX".
- 11. Input Gain**

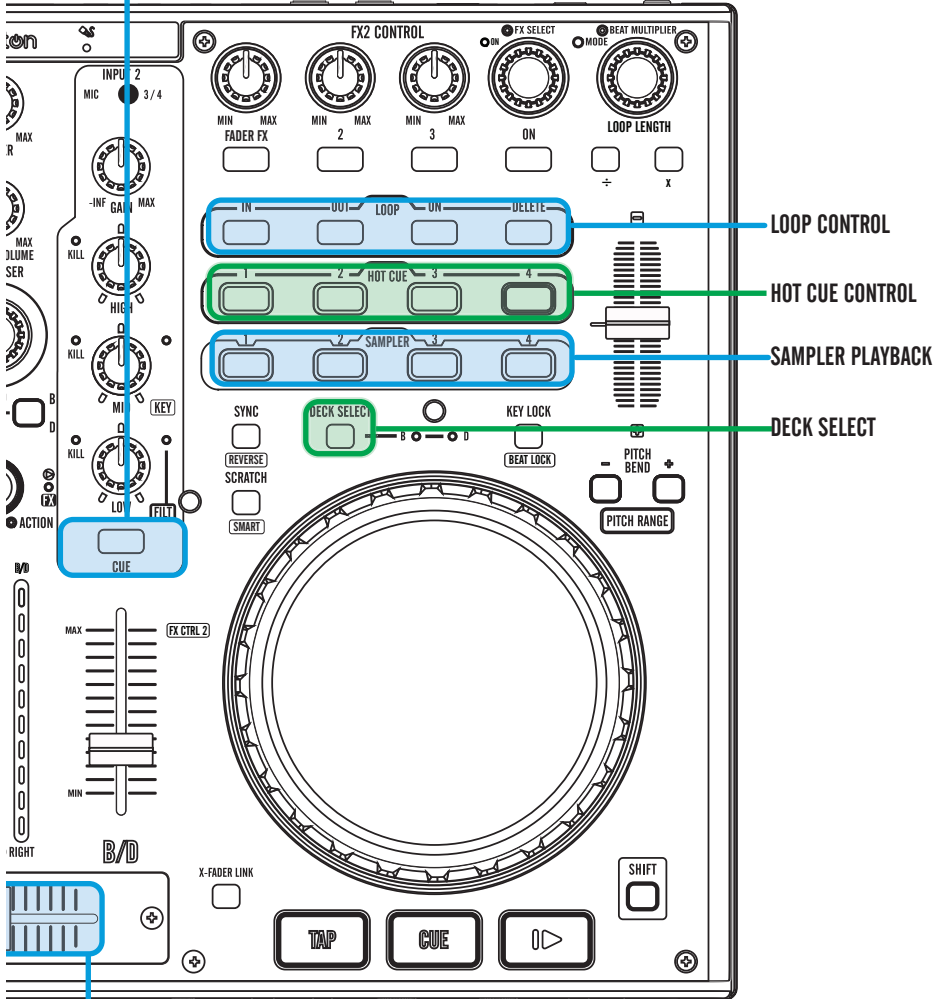
These knobs are used to adjust the audio source signal input gain for a channel. Never use the gain control to adjust a channel output volume, as this can lead to distortion.

Controls and Functions



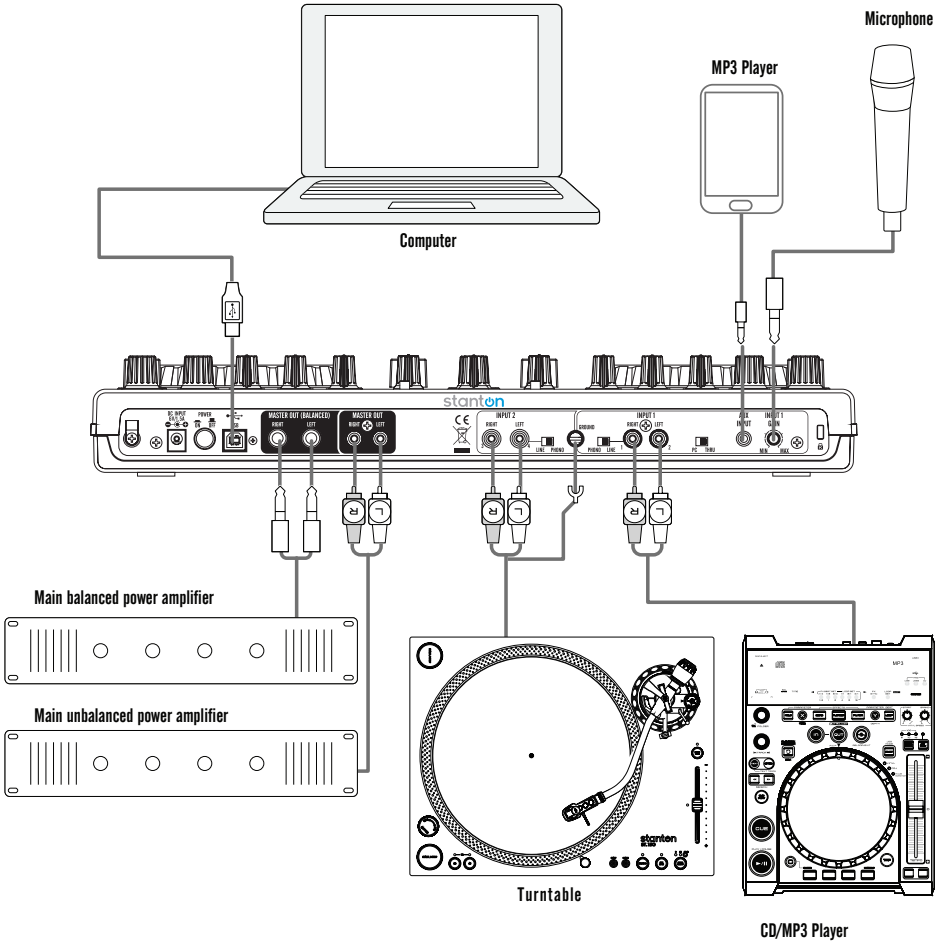
Controls and Functions

CHANNEL CUE CONTROL



CROSSFADER

Connections



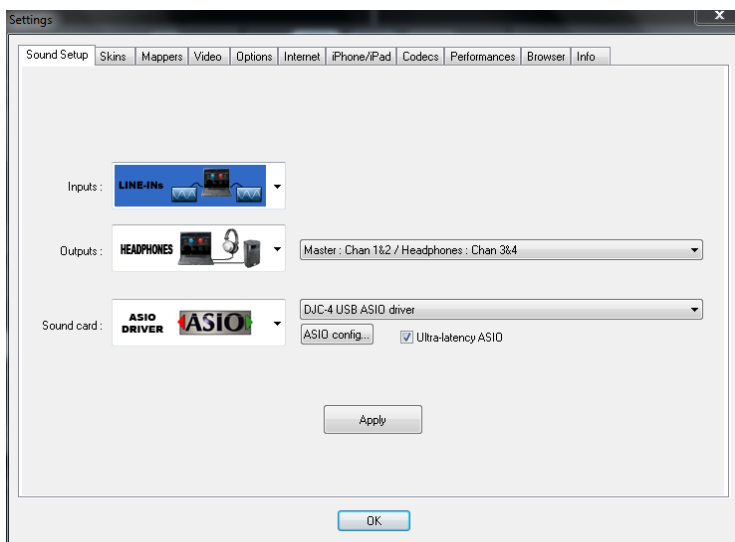
Configuration

Please install the Virtual DJ LE software from the disc that came with your unit or by downloading the latest version from:

Note: PC users will also need to install the ASIO drivers provided with your unit.

http://www.virtualdj.com/download/virtualdjlle/stanton_6712

Once Virtual DJ LE is installed you need to configure the audio outputs by going to the “Settings” in Virtual DJ LE and ensuring that the “Sound Setup” is configured as shown below:



This will ensure that your main outputs from Virtual DJ LE are sent to the Master Outputs on the Stanton DJC-4.

This will also ensure that your cue outputs from Virtual DJ are sent to the headphones output on the Stanton DJC-4.

Setup

There are a number of default MIDI settings you can adjust directly from your hardware. You can set SHIFT button behavior, PUSH-TO-KILL encoder behavior, and your MIDI channel. Your DJC.4 sends MIDI data over 4 channels at once, allowing a unique channel message per deck.

CHANNEL

You can change channel by hold the LEFT DECK “DECK SWITCH” button for 3 seconds and press the Left Deck Hot Cue button 1 to 4. Default channel is Channel 1~4

Hot Cue 1 for Channel 1~4

Hot Cue 2 for Channel 5~8

Hot Cue 3 for Channel 9~12

Hot Cue 4 for Channel 13~16

SETTING

You can, at any time, adjust the following settings. Make sure that you wish to change these settings though, as the default software mappings that come with your DJC.4 are set from the factory.

- **SHIFT button**

You can change the SHIFT mode type from HOLD to TOGGLE by hold the left deck “DECK SWITCH” button for 3 seconds and press the “Channel 1 Monitor Cue” button to switch the mode. Default setting is “HOLD” mode (SHIFT is only engaged when you press and hold the button).

- **Sampler**

You can set your SAMPLER BUTTON(S) default from DECK to GLOBAL. The default (used by most DJ software) is DECK (sample button note values are sent on a per-deck basis). You can change the Sampler setting by hold the left deck “DECK SWITCH” button for 3 seconds and press the “Channel 2 monitor Cue” button to switch the mode.

- **EQ KILL button**

You can switch On/Off the EQ PUSH-TO-KILL function by holding the left deck “DECK SWITCH” button for 3 seconds, followed by pressing the “Load B/D” button to switch the mode. The default setting enables EQ PUSH-TO-KILL.

MIDI MAP

1.Key & Knob

LEFT and RIGHT DECK			
Button	MIDI Command	MIDI Command	SHIFT +
AUTO_LOOP	09,9n,01,7F	09,9n,01,00	0x33
AUTO_LOOP(knob)	0B,Bn,01,41(Increment)	0B,Bn,01,3F(Decrement)	0x1F
Loop -	09,9n,02,7F	09,9n,02,00	0x34
Loop X	09,9n,03,7F	09,9n,03,00	0x35
PITCH_FADER	0E,En,00,00	0E,En,7F,7F	
IN	09,9n,04,7F	09,9n,04,00	0x36
OUT	09,9n,05,7F	09,9n,05,00	0x37
LOOP_ACTIVE	09,9n,06,7F	09,9n,06,00	0x38
DELETE	09,9n,07,7F	09,9n,07,00	0x39
HOT_CUE1	09,9n,08,7F	09,9n,08,00	0x3A
HOT_CUE2	09,9n,09,7F	09,9n,09,00	0x3B
HOT_CUE3	09,9n,0A,7F	09,9n,0A,00	0x3C
HOT_CUE4	09,9n,0B,7F	09,9n,0B,00	0x3D
SAMPLE1	09,9n,0C,7F	09,9n,0C,00	0x3E
SAMPLE2	09,9n,0D,7F	09,9n,0D,00	0x3F
SAMPLE3	09,9n,0E,7F	09,9n,0E,00	0x40
SAMPLE4	09,9n,0F,7F	09,9n,0F,00	0x41
KEY_LOCK	09,9n,10,7F	09,9n,10,00	0x42
DECK	09,9n,11,7F	09,9n,11,00	0x43
SYNC	09,9n,12,7F	09,9n,12,00	0x44
PITCH_BEND-	09,9n,13,7F	09,9n,13,00	0x45
PITCH_BEND+	09,9n,14,7F	09,9n,14,00	0x46
SCRATCH	09,9n,15,7F	09,9n,15,00	0x47
JOG_WHEEL_TOUCH	09,9n,26,7F	09,9n,26,00	0x58
JOG_WHEEL	0B,Bn,02,41+ (Forward)	0B,Bn,02,3F-(Reverse)	0x20
CUE_PLAY	09,9n,16,7F	09,9n,16,00	0x48
CUE	09,9n,17,7F	09,9n,17,00	0x49
PLAY	09,9n,18,7F	09,9n,18,00	0x4A
GAIN	0B,Bn,03,00(Minimum)	0B,Bn,03,7F(Maximum)	0x21
HIGH_KILL	09,9n,19,7F	09,9n,19,00	0x48
HIGH(knob)	0B,Bn,04,00(Minimum)	0B,Bn,04,7F(Maximum)	0x22
MID_KILL	09,9n,1A,7F	09,9n,1A,00	0x4C
MID(knob)	0B,Bn,05,00(Minimum)	0B,Bn,05,7F(Maximum)	0x23
LOW_KILL	09,9n,1B,7F	09,9n,1B,00	0x4D
LOW(knob)	0B,Bn,06,00(Minimum)	0B,Bn,06,7F(Maximum)	0x24
CH_CUE	09,9n,1C,7F	09,9n,1C,00	0x4E
CHANNEL_FADER	0B,Bn,07,00(Minimum)	0B,Bn,07,7F(Maximum)	0x25
LOAD_AC	09,9n,22,7F	09,9n,22,00	0x54
LOAD_BD	09,9n,23,7F	09,9n,23,00	0x55
FX(2)_SELECT	09,9n,1D,7F	09,9n,1D,00	0x4F
FX(2)_SELECT(knob)	0B,Bn,08,41(Increment)	0B,Bn,08,3F(Decrement)	0x26
FX(2)_ON	09,9n,1E,7F	09,9n,1E,00	0x50
FX(2)_EFX1	09,9n,1F,7F	09,9n,1F,00	0x51
FX1(2)_EFX1(knob)	0B,Bn,09,00(Minimum)	0B,Bn,09,7F(Maximum)	0x27
FADER_FX(2)_EFX2	09,9n,20,7F	09,9n,20,00	0x52
FX1(2)_EFX2(knob)	0B,Bn,0A,00(Minimum)	0B,Bn,0A,7F(Maximum)	0x28
FX1(2)_EFX3	09,9n,21,7F	09,9n,21,00	0x53
FX1(2)_EFX3(knob)	0B,Bn,0B,00(Minimum)	0B,Bn,0B,7F(Maximum)	0x29
CENTER DECK			
Button	MIDI Command	MIDI Command	
SHIFT	09,9n,2D,7F	09,9n,2D,00	
SAMPLE_VOLUME	0B,Bn,0D,00(Minimum)	0B,Bn,0D,7F(Maximum)	0x2B
BROWSER	09,9n,27,7F	09,9n,27,00	0x59
BROWSER(knob)	0B,Bn,0E,41(Increment)	0B,Bn,0E,3F(Decrement)	0x2C
VIDEO	09,9n,28,7F	09,9n,28,00	0x5A

MIDI MAP

VIDEO(knob)	0B,Bn,0F,41(Increment)	0B,Bn,0F,3F(Decrement)	0x2D
AUDIO CROSS FADER	0B,Bn,10,00(Minimum)	0B,Bn,10,7F(Maximum)	0x2E
VIDEO CROSS FADER	0B,Bn,11,00(Minimum)	0B,Bn,11,7F(Maximum)	0x2F
SMART_XF	09,9n,24,7F	09,9n,24,00	0x56
XF LINK	09,9n,25,7F	09,9n,25,00	0x57
CF_CURVE	0B,Bn,12,00(Minimum)	0B,Bn,12,7F(Maximum)	0x30
CUE MIXING	0B,Bn,13,00(Minimum)	0B,Bn,13,7F(Maximum)	0x31
CUE_LEVEL	0B,Bn,14,00(Minimum)	0B,Bn,14,7F(Maximum)	0x32

2.Leds

	LEFT and RIGHT DECK		
LEDs	LED ON		LED OFF
Loop -	09,9n,02,7F		09,9n,02,00
Loop X	09,9n,03,7F		09,9n,03,00
IN	09,9n,04,7F		09,9n,04,00
OUT	09,9n,05,7F		09,9n,05,00
LOOP ACTIVE	09,9n,06,7F		09,9n,06,00
DELETE	09,9n,07,7F		09,9n,07,00
HOT CUE1	09,9n,08,7F		09,9n,08,00
HOT CUE2	09,9n,09,7F		09,9n,09,00
HOT CUE3	09,9n,0A,7F		09,9n,0A,00
HOT CUE4	09,9n,0B,7F		09,9n,0B,00
SAMPLE1	09,9n,0C,7F		09,9n,0C,00
SAMPLE2	09,9n,0D,7F		09,9n,0D,00
SAMPLE3	09,9n,0E,7F		09,9n,0E,00
SAMPLE4	09,9n,0F,7F		09,9n,0F,00
KEY LOCK	09,9n,10,7F		09,9n,10,00
SYNC	09,9n,12,7F		09,9n,12,00
PITCH BEND-	09,9n,13,7F		09,9n,13,00
PITCH BEND+	09,9n,14,7F		09,9n,14,00
SCRATCH	09,9n,15,7F		09,9n,15,00
CUE PLAY	09,9n,16,7F		09,9n,16,00
CUE	09,9n,17,7F		09,9n,17,00
PLAY	09,9n,18,7F		09,9n,18,00
HIGH KILL	09,9n,19,7F		09,9n,19,00
MID_KILL	09,9n,1A,7F		09,9n,1A,00
KEY_ON	09,9n,26,7F		09,9n,26,00
LOW_KILL	09,9n,1B,7F		09,9n,1B,00
FILTER_ON	09,9n,27,7F		09,9n,27,00
CH_CUE	09,9n,1C,7F		09,9n,1C,00
CH_METER1	0B,Bn,02,0C		0B,Bn,02,00
CH_METER2	0B,Bn,02,18		0B,Bn,02,00
CH_METER3	0B,Bn,02,24		0B,Bn,02,00
CH_METER4	0B,Bn,02,30		0B,Bn,02,00
CH_METER5	0B,Bn,02,3C		0B,Bn,02,00
CH_METER6	0B,Bn,02,48		0B,Bn,02,00
CH_METER7	0B,Bn,02,54		0B,Bn,02,00
CH_METER8	0B,Bn,02,60		0B,Bn,02,00
CH_METER9	0B,Bn,02,6C		0B,Bn,02,00
CH_METERA	0B,Bn,02,78		0B,Bn,02,00
FX1(2) ON	09,9n,1E,7F		09,9n,1E,00
FX1(2) EFX1	09,9n,1F,7F		09,9n,1F,00
FX1(2) EFX2	09,9n,20,7F		09,9n,20,00
FX1(2) EFX3	09,9n,21,7F		09,9n,21,00
LOAD_AC	09,9n,22,7F		09,9n,22,00
LOAD_BD	09,9n,23,7F		09,9n,23,00

MIDI MAP

CENTER DECK		
LEDs	LED ON	LED OFF
TX	09,9n,2E,7F	09,9n,2E,00
FX	09,9n,2F,7F	09,9n,2F,00
VIDEO_XF	09,9n,24,7F	09,9n,24,00
XF_LINK	09,9n,25,7F	09,9n,25,00
MASTER_METER_L1	0B,Bn,03,0C	0B,Bn,03,00
MASTER_METER_L2	0B,Bn,03,18	0B,Bn,03,00
MASTER_METER_L3	0B,Bn,03,24	0B,Bn,03,00
MASTER_METER_L4	0B,Bn,03,30	0B,Bn,03,00
MASTER_METER_L5	0B,Bn,03,3C	0B,Bn,03,00
MASTER_METER_L6	0B,Bn,03,48	0B,Bn,03,00
MASTER_METER_L7	0B,Bn,03,54	0B,Bn,03,00
MASTER_METER_L8	0B,Bn,03,60	0B,Bn,03,00
MASTER_METER_L9	0B,Bn,03,6C	0B,Bn,03,00
MASTER_METER_LA	0B,Bn,03,78	0B,Bn,03,00
MASTER_METER_R1	0B,Bn,04,0C	0B,Bn,04,00
MASTER_METER_R2	0B,Bn,04,18	0B,Bn,04,00
MASTER_METER_R3	0B,Bn,04,24	0B,Bn,04,00
MASTER_METER_R4	0B,Bn,04,30	0B,Bn,04,00
MASTER_METER_R5	0B,Bn,04,3C	0B,Bn,04,00
MASTER_METER_R6	0B,Bn,04,48	0B,Bn,04,00
MASTER_METER_R7	0B,Bn,04,54	0B,Bn,04,00
MASTER_METER_R8	0B,Bn,04,60	0B,Bn,04,00
MASTER_METER_R9	0B,Bn,04,6C	0B,Bn,04,00
MASTER_METER_RA	0B,Bn,04,78	0B,Bn,04,00

	DECK A	DECK B	DECK C	DECK D	CENTER
Mode1(n)	0	1	2	3	0
Mode2(n)	4	5	6	7	4
Mode3(n)	8	9	10	11	8
Mode4(n)	12	13	14	15	12

FAQ/TROUBLESHOOTING

1. My EQ Kill knobs do not work.

-You can switch On/Off the EQ PUSH-TO-KILL function by holding the left deck "DECK SWITCH" button for 3 seconds, followed by pressing the "Load B/D" button to switch the mode. The default setting enables EQ PUSH-TO-KILL.

2. I am getting an error message when I plug in my device that says "TBIA-The Data Is Invalid".

-This error is related to other audio devices you may have installed on your Windows PC and lower-quality ASIO drivers. Please try uninstalling your device and reinstalling.

3. I have Virtual DJ Pro, and the controller isn't working/don't have the correct skin that comes with Virtual DJ LE.

-You can download the latest skins and configuration files from www.virtualdj.com. This is available to all registered customers of Virtual DJ Pro.

4. I am getting pops/cracks/digital artifacts in my audio.

-Please raise your latency settings in your software of choice. Often times, this is directly related to running the application on very low latency settings on a lower-specification computer, and can be resolved by raising the latency just a bit.

5. I use software other than Virtual DJ.

-Please go to www.stantondj.com for updated preset/mapping files for other popular DJ software.

6. My wheels don't scratch/I can get them to stop the audio when I am not touching the platters.

-Please check the position of the "Wheel Sensitivity" knobs on the front of your DJC.4 These knobs, if turned all the way to the left, can cause the platters to not respond to touch, and, if turned too far to the right, can cause the platters to respond even if your hand is not resting on the platter.

7. I want to obtain a copy of Virtual DJ Pro. Is there a discount?

-Yes, please go to www.virtualdj.com and register your Virtual DJ LE serial number. There is a special discount offer made to users to purchase Virtual DJ Pro at a reduced price.

WARRANTY

Thank you for choosing one of Gibson Pro Audio's brands (Stanton, KRK, or Cerwin Vega!).

Your satisfaction is extremely important to us. We proudly stand behind the quality of our work and appreciate that you put your trust in us. Registering your merchandise will help us guarantee that you are kept up to date on our latest advances.

To Register Merchandise Purchased from an Authorized Gibson Pro Audio Dealer in the U.S.:

Please go to: <http://www.gibson.com> and register online.

Or you may send your warranty card to:

Gibson Customer Service

309 Plus Park Blvd.

Nashville, TN 37217

If you have any questions you may contact customer service at:

1-800-4GIBSON (1-800-444-2766)

e-mail: service@gibson.com

FOR MERCHANDISE PURCHASED FROM AN AUTHORIZED GIBSON PRO AUDIO DISTRIBUTOR OUTSIDE OF THE US, PLEASE CONTACT THE DISTRIBUTOR FROM WHOM YOU PURCHASED YOUR MERCHANDISE FOR TO REGISTER YOUR WARRANTY AND FOR HANDLING AND RESOLUTION OF ALL WARRANTY-RELATED ISSUES.

Gibson Pro Audio Warranty

If at any time your Gibson Pro Audio product (which includes Stanton, KRK, or Cerwin Vega! brands) malfunctions as a result of faulty materials or workmanship, Gibson Pro Audio or one of Gibson Pro Audio's Authorized Service Centers in the US will repair the defect(s) or replace the merchandise, as it deems appropriate at its sole discretion.

Warranty Period (from date of Purchase as listed on the Bill of Sale):

Stanton

One (1) year for all Stanton products.

KRK

Three (3) years from all studio monitors.

One (1) year all headphones, computer audio devices, including room correction devices.

Cerwin Vega!

Five (5) years for all passive speaker systems.

Three (3) years for all active speaker systems.

One (1) year for mixers.

Gibson will warrant all replacement parts and repairs for ninety (90) days from the date of original shipment.

In the unlikely event that your merchandise is destroyed, lost or damaged beyond repair while in the possession of Gibson or one of Gibson Pro Audio's Authorized Service Centers for repair, Gibson will replace that merchandise with one of the same or most similar style of a value not in excess of the original purchase price of your merchandise. Any insurance covering the merchandise, including but not limited to collector's value insurance, must be carried by owner at owner's expense.

For the fastest and safest merchandise return, please use the original shipping carton and packaging materials. Gibson cannot be responsible for any damages incurred during the shipping process due to poor or inadequate packing.

THIS WARRANTY IS EXTENDED TO THE ORIGINAL RETAIL PURCHASER ONLY AND MAY NOT BE TRANSFERRED OR ASSIGNED TO SUBSEQUENT OWNERS. IN ORDER TO VALIDATE YOUR WARRANTY, AND AS A CONDITION PRECEDENT TO WARRANTY COVERAGE HEREUNDER, YOU MUST REGISTER YOUR WARRANTY WITHIN FIFTEEN (15) DAYS FOLLOWING THE ORIGINAL DATE OF PURCHASE.YOUR PROOF OF PURCHASE OR SALES RECEIPT MUST ACCOMPANY ALL REQUESTS FOR WARRANTY COVERAGE.

This warranty is subject to the following limitations:

THIS WARRANTY DOES NOT COVER

1. Any merchandise that has been altered or modified in any way or upon which the serial number has been tampered with or altered.
2. Any merchandise whose warranty card has been altered or upon which false information has been given.
3. Any merchandise that has been damaged due to misuse, negligence, or improper operation.
4. Any merchandise that has been damaged by accident, flood, fire, lightning, or other acts of God.
5. Shipping damage of any kind.
6. Any merchandise that has been subjected to extremes of humidity or temperature.
7. Any merchandise that has been purchased from an unauthorized dealer, or upon which unauthorized repair or service has been performed.

GIBSON MAKES NO OTHER EXPRESS WARRANTY OF ANY KIND WHATSOEVER. ALL IMPLIED WARRANTIES, INCLUDING WARRANTIES OF MERCHANTABILITY AND FITNESS FOR A PARTICULAR PURPOSE, EXCEEDING THE SPECIFIC PROVISIONS OF THIS WARRANTY ARE HEREBY DISCLAIMED AND EXCLUDED FROM THIS WARRANTY. SOME STATES AND/OR COUNTRIES DO NOT ALLOW THE EXCLUSION OR LIMITATION OF IMPLIED WARRANTIES SO THAT THE ABOVE MAY NOT APPLY TO YOU.

GIBSON SHALL NOT BE LIABLE FOR ANY SPECIAL, INDIRECT CONSEQUENTIAL, INCIDENTAL OR OTHER SIMILAR DAMAGES SUFFERED BY THE PURCHASER OR ANY THIRD PARTY, INCLUDING WITHOUT LIMITATION, DAMAGES FOR LOSS OF PROFITS OR BUSINESS OR DAMAGES RESULTING FROM USE OR PERFORMANCE OF THE MERCHANDISE, WHETHER IN CONTRACT OR IN TORT, EVEN IF GIBSON OR ITS AUTHORIZED REPRESENTATIVE HAS BEEN ADVISED OF THE POSSIBILITY OF SUCH DAMAGES, AND GIBSON SHALL NOT BE LIABLE FOR ANY EXPENSES, CLAIMS, OR SUITS ARISING OUT OF OR RELATING TO ANY OF THE FOREGOING.

FOR MERCHANDISE PURCHASED FROM AN AUTHORIZED GIBSON PRO AUDIO DISTRIBUTOR OUTSIDE OF THE US, PLEASE CONTACT THE DISTRIBUTOR FROM WHOM YOU PURCHASED YOUR MERCHANDISE FOR THE HANDLING AND RESOLUTION OF ALL WARRANTY ISSUES. FOR THESE PURCHASES, THE ABOVE-DESCRIBED WARRANTY IS NOT APPLICABLE.

How to Obtain Warranty Service

Warranty Service outside the United States:

To initiate a warranty repair, please contact the Authorized Gibson Pro Audio distributor from whom you purchased your merchandise, and follow the distributor's return/warranty policy.

Warranty Service for Merchandise Purchased from an Authorized Gibson Pro Audio Dealer in the U.S.

In the event of malfunction of your Gibson Pro Audio merchandise, the Dealer or Owner must call Customer Service @ 1-800-4GIBSON (1-800-444-2766) and obtain a Return Authorization number from the customer service agent. No merchandise may be returned to Gibson without such prior Return Authorization, and the Return Authorization number must be written on the outside of the shipping package. The Customer Service agent will provide the address and additional shipping instructions. Owner must ship the merchandise, freight, and insurance pre-paid to the address provided by the customer service representative. Only Authorized Gibson Pro Audio Service Centers may perform warranty service and any service performed by unauthorized persons will void this warranty. Gibson disclaims liability for defects or damage caused by services performed by unauthorized persons or non-warranty service not performed by Gibson or an Authorized Gibson Pro Audio Service Center.

When contacting Gibson, you must include a complete written description of the malfunction of the merchandise. If non-warranty work is required or recommended, a quotation will be issued and must be approved by you before any non-warranty work is commenced. You should consider quotations obtained for non-warranty work immediately and advise the Authorized Gibson Pro Audio Service Center or Gibson of your wishes. You are not required to purchase non-warranty work in order to obtain service on materials covered by this warranty. Following its inspection of merchandise upon its arrival, Gibson or the Authorized Gibson Pro Audio Service Center will advise you or your dealer of the approximate date of completion. The repaired merchandise or part will be returned to you or your dealer, freight collect insured.

No representative or other person is authorized to assume for Gibson any liability except as stated in this warranty. This warranty gives you specific rights which vary from state to state or from country to country.

For further information, write:

Customer Service Dept.,
Gibson Customer Service
309 Plus Park Blvd.
Nashville, TN 37217

Or call:

1-800-4GIBSON

Microsoft® Windows™ is a registered trademark of Microsoft® Corp. Apple® OSX™ is a registered trademark of Apple® Corp. Virtual DJ™ is a registered trademark of Atomix™ Productions

