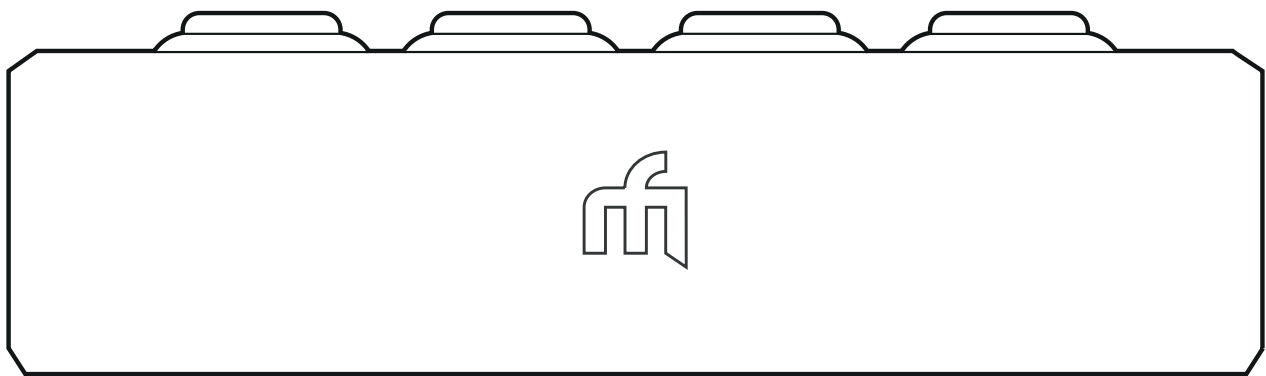


# Midi Fighter

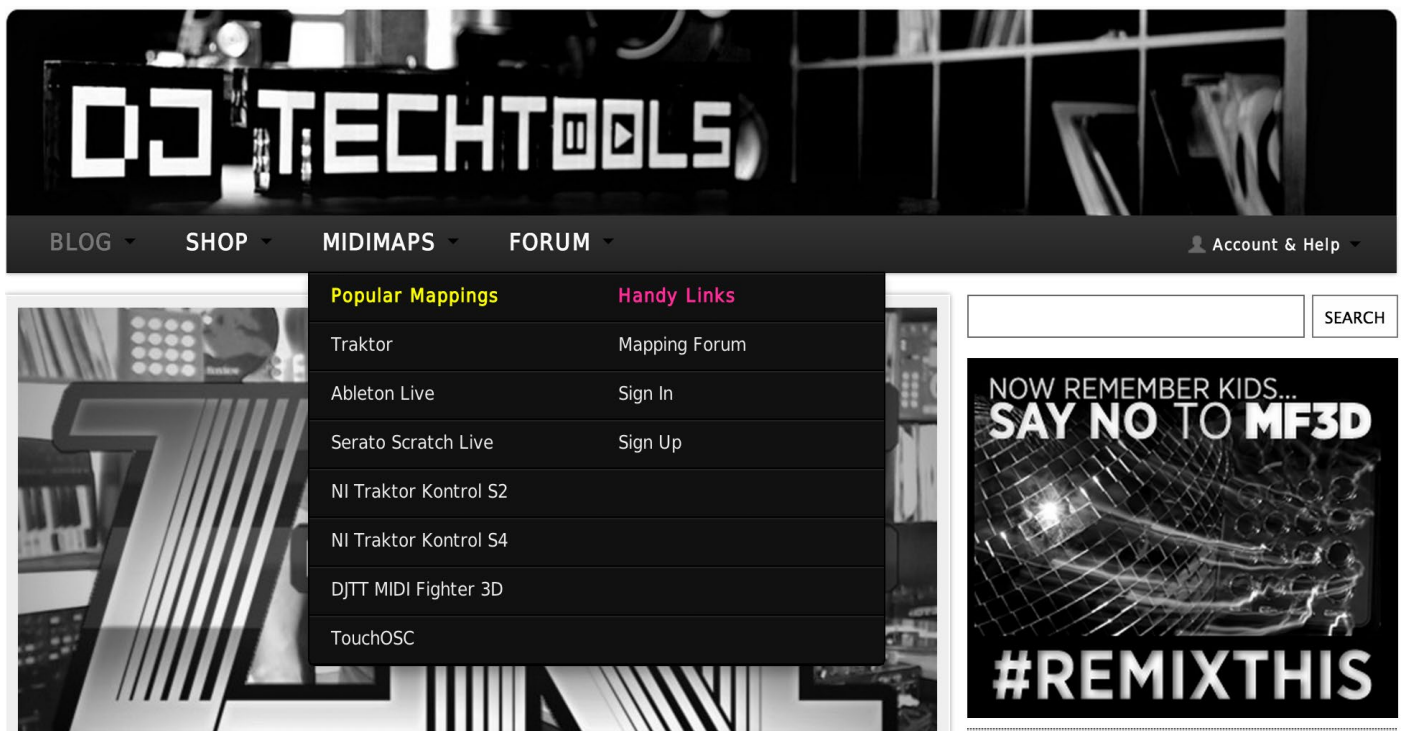
## Traktor Quick Start Guide



DJTECHTOOLS.COM

Ver1.02

# 1. Choose a Mapping



Visit [maps.djtechtools.com](https://maps.djtechtools.com) and decide on what mapping you want to use. Once you have decided on your mapping download the .tsi file to

[Documents/Native Instruments/Traktor/Settings](#)

## 2. Get the Midi Fighter Utility

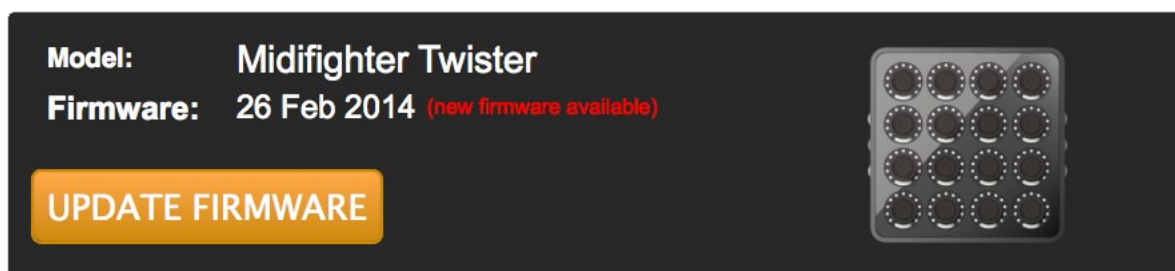
Download and install the Midi Fighter Utility Software. This is available from the downloads section of the product page or by following the links below.

[Midi Fighter Utility OSX](#)

[Midi Fighter Utility WIN](#)

---

## 3. Update Your Midi Fighter



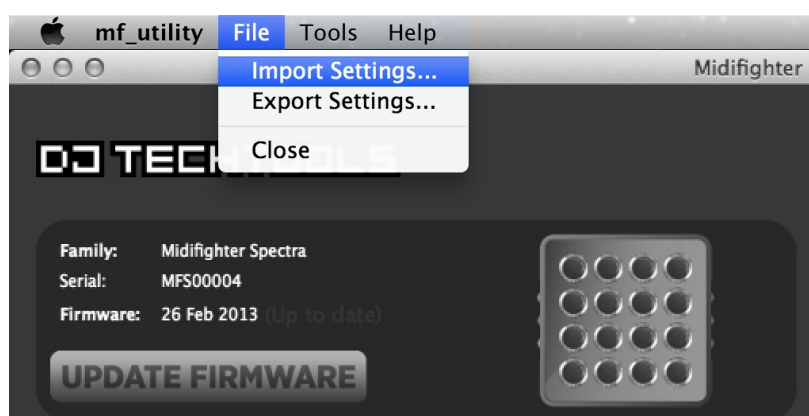
Launch the Midi Fighter Utility software and connect your Midi Fighter. If the firmware is out of date you can update it by clicking the large orange “Update Firmware” button. If this button is grey your firmware is already up to date.

---

## 4. Configure Your Midi Fighter

It is important to make sure your Midi Fighter is correctly configured for the mapping you are trying to use. There are two ways of doing this, first by using a settings file, or alternatively you can manually configure the relevant settings.

All DJTT official mappings will come with a settings file for each compatible Midi Fighter, to load these settings first launch the Midi Fighter Utility and connect your Midi Fighter, then in the menu click File>Import Settings and select the settings file (.MFS) provided with your mapping. You must then click “Send to Midi Fighter” to save the new settings to the device.



Alternatively if no settings file was provided you can manually configure the device. Carefully read the “Description and Instructions” section on the mapping web page and then change all relevant device settings using the Midi Fighter Utility,

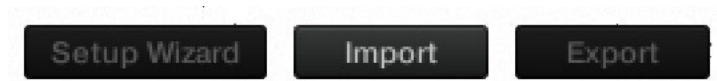
**Once you are done be sure to save the settings to the device by clicking “Send to Midi Fighter”.**

## 5. Loading the Mapping

Launch Traktor Pro and click the Preferences button in the top right corner of the interface.



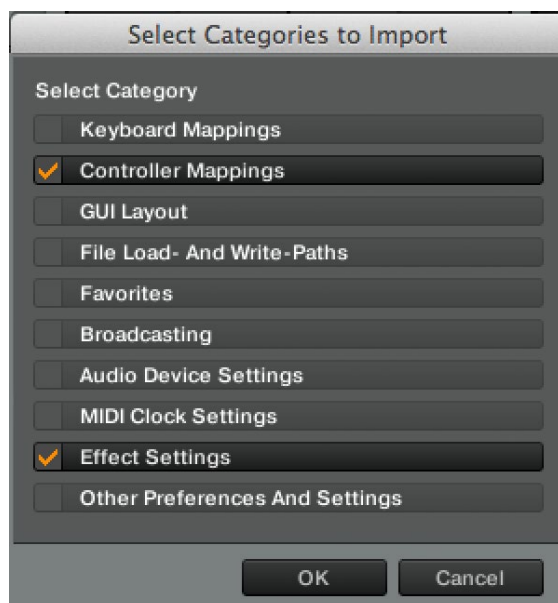
Now click the large “Import” button on the bottom left of the preferences window.



Navigate to your Traktor Settings folder, or wherever you saved the mapping and select the .TSI file.

In the “Import Categories” window make sure that both “Controller Mappings” and “Effect Settings” are selected, then click ‘OK’.

***Note: The Midi Fighter Twister Sequencer mapping requires that the MIDI Clock Settings are selected for import, some mapping will also require “Other preferences and Settings”.***



Now click the “Import” button and then **REPEAT** this whole import process as sometimes the effects settings do not import correctly the first time.

---

## 6. Check Your MIDI IN/OUT

Now click on the “Controller Manager” in the Preferences list.

Select the mapping you just loaded under “Device” and check that the Midi Controller you are using the mapping with is selected under BOTH IN-Port and Out-Port.



NOTE: Some mapping have multiple parts, these will all appear under the “Device” list. MIDI IN & OUT ports must be set for ALL parts for a mapping to work correctly.

---

## 7. Rock Out!

Thats it, your Midi Fighter should be ready to rock!

*If you are having problems check out the next page ....*

# Common Issues

## 1. I followed all the steps, but nothing happens when I push buttons on my controller!

First close down all other MIDI software, then restart Traktor with your controller connected. Now check the device info section.



If the controller icon between CTRL and AUDIO is grey then either you do not have a mapping loaded or no controllers are connected to your mappings.

Go to Preferences/Controller manager and check that the mapping you loaded appears in the device drop down.



If the mapping is appears in the device drop down, but the controller icon is still greyed out make sure that you have selected the correct controller for both the In-Port and Out-Port.



If the controller icon appears blue but you still get no response from Traktor check that the CTRL indicator flashes blue whenever you press a button on your device. If the CTRL indicator does NOT flash when you press a button on your device you must check that the In-Port and Out-Port under Preferences/Controller Manager is set to the MIDI controller you are trying to use with that mapping.

## 2. It works ... kind of

If the mapping doesnt work as described there are three common issues.

The first is incorrect FX settings, check that you had "Effects Settings" selected in the Import Catagories (Step 5), also try importing the mapping again twice to ensure the FX settings are correctly imported.

The second is incorrect device settings or firmware, check that your device has the latest firmware (Step 3) that you correctly configured your device (Step 4) AND that your pressed the large blue "Send to Midi Figher Button" to save the settings to the device.

Finally check that the mapping your are using was designed for the version of Traktor you are running, for example mappings designed for Traktor 2 will not work with Traktor 1.