

TRAKTOR KONTROL Z2

Manual



The information in this document is subject to change without notice and does not represent a commitment on the part of Native Instruments GmbH. The software described by this document is subject to a License Agreement and may not be copied to other media. No part of this publication may be copied, reproduced or otherwise transmitted or recorded, for any purpose, without prior written permission by Native Instruments GmbH, hereinafter referred to as Native Instruments.

“Native Instruments”, “NI” and associated logos are (registered) trademarks of Native Instruments GmbH.

Mac, Mac OS, GarageBand, Logic, iTunes and iPod are registered trademarks of Apple Inc., registered in the U.S. and other countries.

Windows, Windows Vista and DirectSound are registered trademarks of Microsoft Corporation in the United States and/or other countries.

All other trade marks are the property of their respective owners and use of them does not imply any affiliation with or endorsement by them.

Document authored by: Brian Smith, Patryk Korman

TRAKTOR software version: 2.6 (10/2012)

Special thanks to the Beta Test Team, who were invaluable not just in tracking down bugs, but in making this a better product.

Germany

Native Instruments GmbH
Schlesische Str. 29-30
D-10997 Berlin
Germany
www.native-instruments.de

USA

Native Instruments North America, Inc.
6725 Sunset Boulevard
5th Floor
Los Angeles, CA 90028
USA
www.native-instruments.com



© Native Instruments GmbH, 2012. All rights reserved.

Table of Contents

1	Welcome to the TRAKTOR KONTROL Z2!	8
1.1	Document Conventions	9
1.2	Names and Pet Names for Software and Hardware	10
1.3	The TRAKTOR KONTROL Z2 Documentation At a Glance	10
1.3.1	The Setup Guide	10
1.3.2	The TRAKTOR KONTROL Z2 Manual	10
1.3.3	The TRAKTOR Manual	10
1.3.4	The Controller Editor Manual	11
2	System and Power Requirements	12
2.1	Power Requirements	12
2.2	Software System Requirements	12
3	Using the Z2 as a Stand-alone DJ Mixer (Direct Mode)	13
3.1	Connectivity	13
3.2	Connecting The Z2	14
3.3	Adding a Microphone Or Other Audio Source	15
3.4	Using the Channel EQs and Filters	16
4	Using the Z2 with TRAKTOR (TRAKTOR Mode)	17
4.1	Basics	17
4.1.1	Connecting the Z2	17
4.1.2	Browsing and Loading	18
4.1.3	Duplicating Tracks from Deck to Deck	19
4.1.4	Starting and Stopping Decks	19
4.1.5	Deck Volume Controls and Crossfader	20
4.1.6	Adjusting Gain	21
4.1.7	Pre-listening	22
4.2	Creating Loops and BeatJumping	23

4.3	Using the Cue/Sample Trigger Buttons	24
4.3.1	Changing Deck Focus For The Cue/Sample Trigger Buttons	24
4.3.2	Working with Cue Points	24
4.3.3	Working with Loops	25
4.3.4	Controlling Remix Decks	26
4.4	Flux Mode	27
4.5	Filter and EQ Knob Snap	28
4.6	Macro FX	29
4.7	Using Additional Controllers	30
4.8	Customizing the Z2	30
5	TRAKTOR KONTROL Z2 Hardware Reference	31
5.1	Introduction	31
5.2	Rear Panel	32
5.2.1	AC Power	32
5.2.2	USB Connections	33
5.2.3	OUTPUT Section	34
5.2.4	INPUT Section	35
5.2.5	AUX / MIC Section	36
5.2.6	GND (Ground) Screws	36
5.2.7	Kensington Lock Port	37
5.3	Front Panel	37
5.3.1	PHONES Section	38
5.3.2	XF REVERSE Switch	38
5.3.3	XF CURVE Knob	39
5.4	Top Panel	39
5.4.1	AUX / MIC Controls	40
5.4.2	MACRO FX Sections	41
5.4.3	DECK C and DECK D Knobs	43

5.4.4	LOOP (SIZE) Encoders	43
5.4.5	Cue/Sample Trigger Section (1, 2, 3, 4)	45
5.4.6	FLUX Buttons	49
5.4.7	Phono/Line Switches (PH / LN)	50
5.4.8	TRAKTOR Buttons	50
5.4.9	GAIN Knobs	51
5.4.10	EQ (HI, MID, LOW) and FILTER Controls	52
5.4.11	FX Assign Buttons (1, 2)	54
5.4.12	7-Segment Displays	54
5.4.13	Status/Mode Indicators	55
5.4.14	S (Snap), Q (Quantize), and Settings Buttons	55
5.4.15	BROWSE and LOAD Controls	57
5.4.16	Headphone and Cue Control Area	59
5.4.17	REL / INTL Buttons A and B	60
5.4.18	SYNC Buttons A and B	61
5.4.19	SHIFT Button	61
5.4.20	Level Meters	62
5.4.21	Volume Faders And Crossfader	63
5.4.22	OUTPUT Section	64
6	Appendix	65
6.1	The Z2's Preferences In TRAKTOR	65
6.1.1	Mic/Aux Input	67
6.1.2	Secondary Cue	67
6.1.3	Restore Default	67
6.1.4	Calibration	68
6.1.5	LEDs	68
6.2	The Z2 Audio Interface And Control Panel	68
6.2.1	Settings on Mac OS X	69

6.2.2	Settings on Windows: The Control Panel	70
6.3	Cue/Sample LED Color Illumination	75
6.4	Cue/Sample Trigger Buttons: Optional Secondary Functions for Track Decks	76
6.5	Cue/Sample Trigger Buttons: Optional Secondary Functions for Remix Decks	79
6.6	Virtual USB I/O Routing	81
Index	82

1 Welcome to the TRAKTOR KONTROL Z2!

Dear Native Instruments customer,

Thank you for purchasing the TRAKTOR KONTROL Z2, and for your continued trust in Native Instruments products.

The TRAKTOR KONTROL Z2 is a both fully integrated TRAKTOR controller and a standalone digital mixer and audio interface, giving you the full flexibility of DJing with or without your computer. As a fully-functional DJ mixer, the TRAKTOR KONTROL Z2 lets you plug in turntables and CD and use the built-in EQs and filter. You can plug in a microphone and auxiliary audio device (such as an MP3 player). But the real power of the Z2 comes from using both the internal mixing capabilities along with its function as a fully-integrated TRAKTOR controller, integrating perfectly with the TRAKTOR SCRATCH PRO software.

The Z2's top features include:

- Self-contained DJ mixer, controller, and audio interface
- Built-in digital audio processing for standalone mixing — no computer required
- Seamless on-the-fly switching between internal TRAKTOR software mixing and Z2 hardware mixing.
- High-quality faders, knobs, and buttons
- FX knobs for controlling the new TRAKTOR Macro FX and also traditional FX' parameters
- Multi-function cue point and Sample trigger controls
- Full integration of the new Flux mode in TRAKTOR, allowing you to loop and jump back and forth to cue points without losing the timing or phrasing of your tracks
- Generous LED feedback via button backlights, meters, light-pipes, and 7-segment displays
- Push-encoders for quick and easy browsing and auto-looping
- Internal multi-voltage power supply and USB cable
- Bundled with TRAKTOR SCRATCH PRO software and two timecode control records and two timecode control CDs

- Perfectly extendable through the addition of Native Instruments controllers such as the KONTROL X1 and the KONTROL F1
- Built-in USB hub, providing two powered USB ports for connecting other devices such as additional controllers or hard disks to your computer via the Z2

1.1 Document Conventions

This document uses particular formatting to point out special facts and to warn you of potential issues. The icons introducing the following notes let you see what kind of information can be expected:



Whenever this exclamation mark icon appears, you should read the corresponding note carefully and follow the instructions and hints given there if applicable.



This light bulb icon indicates that a note contains useful extra information. This information may often help you to solve a task more efficiently, but does not necessarily apply to the setup or operating systems you are using; however, it's always worth a look.

Furthermore, the following formatting is used:

- Text appearing in (drop-down) menus (such as *Open...*, *Save as...*) and paths to locations on your hard drive or other storage devices is printed in *italics*.
 - Text referring to elements appearing on the screen (labels of buttons, controls, text next to checkboxes, etc.) is printed in **light blue**. Whenever you see this formatting applied, you will find the same text appearing on your computer screen.
 - Text referring to elements printed on hardware is formatted **orange**. Whenever you see this formatting applied, you will find the same text appearing on the hardware.
 - Important names and concepts are printed in **bold**.
- Single instructions are introduced by this play button type arrow.
- Results of actions are introduced by this smaller arrow.

1.2 Names and Pet Names for Software and Hardware

In this manual, we often refer to the TRAKTOR KONTROL Z2 also as the "KONTROL Z2," or simply the "Z2." Likewise, the TRAKTOR SCRATCH PRO 2 software will most often just be referred to as "TRAKTOR."

We also refer to the Z2's buttons with both their primary functions capitalized, and their secondary functions capitalized and in parentheses.

1.3 The TRAKTOR KONTROL Z2 Documentation At a Glance

1.3.1 The Setup Guide

A Setup Guide is available on the TRAKTOR KONTROL Z2 registration page. It will guide you through the software and hardware installation of your TRAKTOR KONTROL Z2. This should be your first step before going any further. Find a link to the registration page on the registration flyer, which is included in your TRAKTOR KONTROL Z2 product box.

1.3.2 The TRAKTOR KONTROL Z2 Manual

That's what you are reading right now! After reading the Setup Guide and following its instructions, you should be ready to go. The next step is to read this document, the TRAKTOR KONTROL Z2 Manual. The Manual will teach you how to use your Z2 in combination with the TRAKTOR software and in a classical DJing setup. It provides a number of step-by-step tutorials and workflows, which will help you mastering the Z2 ([↑3, Using the Z2 as a Stand-alone DJ Mixer \(Direct Mode\)](#) and [↑4, Using the Z2 with TRAKTOR \(TRAKTOR Mode\)](#)), and a general hardware reference ([↑5, TRAKTOR KONTROL Z2 Hardware Reference](#)) explaining each and every element on the device.

1.3.3 The TRAKTOR Manual

For in-depth information on all features provided by the TRAKTOR software, please refer to the TRAKTOR Manual. You can access the TRAKTOR Manual via the *Open Manual...* entry from the [Help](#) menu in the TRAKTOR software.

1.3.4 The Controller Editor Manual

Aside from using your TRAKTOR KONTROL Z2 hardware controller together with the TRAKTOR software, you can also use it as a versatile MIDI controller to pilot any other MIDI-capable application or device. This is made possible by the Controller Editor software, a little application that allows you to precisely define all MIDI assignments on your Z2 when operated in MIDI mode. The Controller Editor should have been installed during the installation procedure. For more information on the Controller Editor and MIDI mapping, please refer to the Controller Editor Manual; you can access the manual via the *Open Manual...* entry from the [Help](#) menu in the Controller Editor software.

2 System and Power Requirements

2.1 Power Requirements

The TRAKTOR KONTROL Z2 requires 115-230VAC (50-60Hz). Because the Z2's power supply is internal, the standard power cord is all you need to connect.

2.2 Software System Requirements

For the minimum system requirements your computer needs to meet, see the TRAKTOR specifications section of the Native Instruments website:

<http://www.native-instruments.com/#/en/products/dj/traktor-pro-2/specifications/?page=2050>.

To check the compatibility with several operating systems, please have a look at: <http://www.native-instruments.com/compatibility>.

3 Using the Z2 as a Stand-alone DJ Mixer (Direct Mode)

Although the Z2 is designed to be a fully integrated mixer, controller, and audio interface for the TRAKTOR software, you can also use it as a fully-fledged two-channel stand-alone mixer, without any computer connections. This gives you a great deal of flexibility, allowing you to play in situations where it might not be possible (or desirable) to use a computer. In the following section, we will describe some typical ways to use the Z2 without a computer connection.

In other words, right out of the box — with no software installation necessary — the Z2 is a solid, high-performing DJ mixer.

3.1 Connectivity

For a complete description of inputs and outputs, please read the Hardware Reference chapter ([↑5, TRAKTOR KONTROL Z2 Hardware Reference](#)). The following is a compact list of the Z2's audio, digital, and power connections.

Audio Inputs

The Z2 has a complete set of standard audio inputs, giving you a great deal of flexibility:

- RCA phono inputs, one stereo pair per channel
- RCA line-level inputs (for connecting a CD player, for example), one stereo pair per channel
- Auxiliary input (from another audio device, such as an MP3 player)
- Microphone input
- Two ground screws for turntable grounding

Audio Outputs

- Two stereo headphone output jacks: one 1/4-inch jack and one 1/8-inch jack (on front panel)
- A stereo pair of Quarter-inch jacks (balanced) for booth outputs

- A stereo pair of XLR jacks for main/master outputs
- A stereo pair of RCA jacks for main/master outputs

USB and Power

- USB Type B port for connecting the Z2 with your computer
- Two USB Type A ports (powered USB Hub) for connecting other USB devices to the Z2
- AC mains connection (115-230V 50-60Hz)

3.2 Connecting The Z2

Connecting the Z2 as a standalone mixer is simple and straightforward (for a more detailed description, please read the separate Setup Guide as instructed in [↑1.3.1, The Setup Guide](#)):

1. Plug the power cord (included) into the rear panel of the Z2 and connect it to a stable AC power source (115-230V 50-60Hz).
2. Switch the Z2 on (power switch on rear panel).
3. Connect turntables, CD players, or other stereo audio sources to the **INPUT** connections (channels A and B) on the rear panel, turntables connect to the **PHONO** sockets, CD players connect to the **LINE** sockets.
4. The **PH-LN** switch at the very top of each channel on the top panel must be at the appropriate position in order for you to hear sound from that channel. If you have hooked up a turntable to the channel, be sure that this is switched to **PH** ("phono") and if you have connected CD players or other line-level inputs, the position should be **LN** ("line").
5. Turn the **MASTER** output knob all the way down (to the left) to avoid unexpectedly loud levels.
6. Make sure that the TRAKTOR buttons at the top of each channel are off (not illuminated). If your Z2 is not connected to a computer, both buttons will be off anyway.
7. Connect the **MAIN OUT** outputs to a mixer or a pair of active speakers.
8. Plug your headphones into the front panel.
9. Get some sound coming from your turntables or CD players.
10. Slowly turn up the **MASTER** knob until the volume is at the desired level.

If you still can't hear anything, make sure that:

- The **GAIN** knobs (at the top of channels A and B) are turned up
- The channel faders are up
- The **FILTER** and EQ band knobs (**HI**, **MID**, **LOW**) are in their center position.



For a description of pre-listening tracks, refer to [↑4.1.7, Pre-listening](#).

3.3 Adding a Microphone Or Other Audio Source

You can also plug a microphone and an additional audio source (line level) into the back of your Z2. Note that the monophonic microphone signal will be summed to both stereo channels of the main (and booth) outputs. The auxiliary stereo audio source (an MP3 player or CD player output, for example) will also be summed directly into the output bus. In other words, the Z2's crossfader and channel faders will have no effect on these inputs.

To connect a microphone:

1. Make sure the **VOLUME** knob in the **AUX / MIC** part of the upper-left corner of the top panel of the Z2 is turned down.
2. Plug your mic into the **MIC** input plug of the **AUX / MIC** area on the rear panel of the Z2.
3. Press the mic button next to the **AUX / MIC VOLUME** knob of the upper-left corner of the top panel.
4. Slowly turn up the **VOLUME** knob until you reach the desired microphone volume level. (Be careful with feedback!).

Plugging in a line-level audio signal is just as easy:

1. Make sure the **AUX / MIC VOLUME** knob is turned down.
2. Plug in your device with a standard RCA-type audio cable to the **AUX** inputs of the **AUX / MIC** input section on the rear panel.
3. Make sure your device is outputting audio.
4. Turn up the **VOLUME** knob on the upper left of the Z2's top panel until you reach the desired auxiliary audio volume level.

3.4 Using the Channel EQs and Filters

The Z2 provides you with a high-quality EQ and filter section on each channel. For a consistent mixing experience, the internal characteristics of the Z2's EQ are exactly the same as TRAKTOR's "P900 Kill" type EQ and "Z" type filter (which are TRAKTOR's default EQ and filter modules). This way, your Z2 Direct mode mixes will sound the same as the ones you do with the TRAKTOR software.

The **FILTER** knob gives you a classic one-knob experience: turn to the left for a high-cut/low-pass and turn to the right for a low-cut/high-pass filtering. In the center position, no filtering is applied to the sound.



Although you can change TRAKTOR's internal EQ and filter characteristics, it is not possible to change the hard-wired EQs and filters in the Z2.

Knob Snap

Sometimes you might want to drop a filter or EQ in or out, without the smooth, classic "knob-turning" effect. Using the **SHIFT** button, you can easily create a drop-in and drop-out effect:

1. While a track is playing, press and hold **SHIFT** while turning the **FILTER** knob nearly all the way to the left. The sound should remain unaffected.
2. Release the **SHIFT** button — you now hear the filter effect, according to the current position of the knob
3. Press and hold **SHIFT** again, this time returning the **FILTER** knob to its center (neutral position). The sound is still being filtered, as long as you continue to hold the **SHIFT** button down.
4. Release the **SHIFT** button and you hear your track unfiltered again.



This works the same way for the three (**LOW**, **MID**, and **HIGH**) EQ knobs. In addition, in TRAKTOR mode (see [↑4, Using the Z2 with TRAKTOR \(TRAKTOR Mode\)](#)), the same effect is possible, even when using TRAKTOR's internal filter and EQ.

4 Using the Z2 with TRAKTOR (TRAKTOR Mode)

Although the TRAKTOR KONTROL Z2 can be used as a solid stand-alone DJ mixer, it becomes most powerful when used with the TRAKTOR software, combining the advantages of a stand-alone mixer and fully-integrated controller in one unit.

4.1 Basics

In this section, we will walk you through some typical scenarios to demonstrate some of the most common use cases when using the Z2 with TRAKTOR. You might want to refer to [↑5, TRAKTOR KONTROL Z2 Hardware Reference](#) while going through the following workflows. In [↑5, TRAKTOR KONTROL Z2 Hardware Reference](#), specific functions of each switch, knob, fader, plug, and display are described in more detail.



In addition, you should refer to the TRAKTOR 2 Manual in case you are uncertain about specific TRAKTOR functionality.



The Z2 is essentially a two-channel mixer. Although you do have some control of TRAKTOR's Decks C and D, the Z2's focus is on two-channel mixing. Therefore, some of the control possibilities are limited to Decks A and B and are not available for Decks C and D, in order to keep the Z2 relatively compact and easy-to-use.

4.1.1 Connecting the Z2

Please refer to the separate Setup Guide (see also [↑1.3.1, The Setup Guide](#)) for detailed instructions on installing the TRAKTOR software, registering the product, and connecting the hardware.

Here's a quick run-down of the hardware setup:

1. Connect the TRAKTOR KONTROL Z2 to AC power and turn the unit on (rear panel switch).
2. Connect the Z2 to your computer with a USB cable (included with the Z2).
3. Start TRAKTOR for the first time and set up the software for use with the Z2 using the Setup Wizard (see also Setup Guide, [↑1.3.1, The Setup Guide](#)).

4. On the TRAKTOR software, the Headers of Decks A and B will indicate **Direct Thru**, meaning that by default, the Z2 is in Direct mode and therefore is not yet enabled for internal (in the TRAKTOR software) mixing. Inside the Decks of the TRAKTOR software you can see the message: **The Mixer Channel is currently in Thru Mode**.
 5. Press the TRAKTOR buttons at the very top of channels A and B on the Z2; they are the buttons with the TRAKTOR logo, on either side of the Snap (**S**), Settings (cogwheel symbol), and Quantize buttons (**Q**). This will switch mixing on the respective channels (A and B) to TRAKTOR mode.
- You are now ready to load some tracks and start mixing!



If you wish to mix audio coming from turntables or CD players connected to the Z2 (**PHONO** or **LINE** inputs, respectively), the TRAKTOR button corresponding to the input channel will need to be off.



You can even combine TRAKTOR mode with Direct mode on the Z2 in a hybrid way: for example, you can have an analog record going into channel B (so the TRAKTOR button for channel B should be off) and have a track playing in the TRAKTOR software on Deck A (the TRAKTOR button for channel A should be on).

4.1.2 Browsing and Loading



For information regarding setting up your Track Collection in TRAKTOR, refer to the TRAKTOR 2 Manual.

To browse the Library and load a track or Remix Set into a Deck:

1. Press and release the **BROWSE** encoder on the Z2 to toggle open the Browser view in TRAKTOR in order to have a clear view of the Browser and the Browser Tree.
2. Rotate the **BROWSE** encoder to scroll up or down the list of tracks in the current browser folder.
3. Press the **SHIFT** button while rotating the Browse encoder to navigate between folders and subfolders in the Browser Tree.
4. When you have found the track or Remix Set you wish to load, press the **LOAD (DUPLICATE)** button (**A** or **B**) corresponding to the Deck into which you wish to load your track or Remix Set.

- The track / Remix Set should now be loaded to one of the Decks A or B.
- ▶ Press and release the **BROWSE** encoder again to minimize TRAKTOR's Browser on the screen.



Note that you cannot load a Remix Set into a Track Deck, nor can you load a track into a Remix Deck. But you can change Deck Flavors within the TRAKTOR software by pressing on a Deck's Deck letter and selecting the Deck Flavor of choice. Please refer to the TRAKTOR Manual for further instructions on changing the Deck Flavor.

4.1.3 Duplicating Tracks from Deck to Deck

You can use the Z2 to duplicate tracks from one Deck to another. This would be the case if you have a track loaded into one Deck, but would like to have the same Track loaded into the other Deck (from Deck A to B or from Deck B to A).

- ▶ Press and hold **SHIFT** and then press the **LOAD (DUPLICATE)** button corresponding to the Deck you into which you want to copy the track. For example: You have a track in Deck B, but you'd like to copy the track over into Deck A, then press the **LOAD (DUPLICATE) A** button.



When you duplicate a track from one Deck to another in this way, all the cue points and loops (as well as the current playhead position) will be duplicated as well.

4.1.4 Starting and Stopping Decks

Usually when using the Z2 with TRAKTOR, you will be controlling TRAKTOR's Decks with Timecode vinyl/CDs. This is the default use case when setting up TRAKTOR for use with the Z2; however, there is a way to start/stop TRAKTOR Decks directly from the Z2. To do this:

- ▶ Press and hold **SHIFT** and press the **REL / INTL (A or B)** button (depending on which Deck you would like to start or stop) to toggle Deck playback.

Note that when you start/stop a Deck this way, TRAKTOR will automatically switch the Deck to Internal Playback mode. In this mode, TRAKTOR will ignore any Timecode control. To switch back to Timecode control, press the relevant **REL / INTL (A or B)** button so that it lights up green. See also [↑5.4.17, REL / INTL Buttons A and B](#) and the TRAKTOR manual for information on Internal Playback vs. Absolute/Relative mode (both Timecode modes).



Because of the special nature of TRAKTOR's Remix Decks, the Deck transport will start when you trigger a Sample Slot by pressing one of the four Cue/Sample Trigger buttons. Once the Deck is playing, you can again push one of the Cue/Sample Trigger buttons to toggle the Mute/Play state of the corresponding Sample Slot. Refer to the TRAKTOR manual for further info on Remix Decks.

4.1.5 Deck Volume Controls and Crossfader

As previously mentioned, the Z2 is essentially a two-channel mixer. The two channel faders, therefore, control the volume of Decks A and B.



You can control the individual levels of Decks C and D with their individual channel volume knobs (the knobs with the **DECK C** and **DECK D** labeled displays below).

The crossfader fades between both *pairs* of Decks by default. In other words, if the crossfader is all the way to the left, you will only hear Decks A and C (if their volume fader of A and the volume knob of C are turned up). If it is all the way to the right, you will hear both B and D (if their volume controls are turned up).



You can see whether any sound is playing in Decks C and D by looking at the displays beneath their volume knobs (labeled **DECK C** and **DECK D**). The illumination level of the labels varies according to the signal level in the Deck, even when the Deck's volume knob is all the way down. However, the illumination does depend on the gain setting of the channel — if the **GAIN** knob (on the TRAKTOR software) is turned all the way down, the Deck volume knob indicators will be dimmed.



On the TRAKTOR software, it is possible to change what channels are affected by the crossfader by clicking on the crossfader assign letters left and right of the crossfader (refer to the TRAKTOR manual for further information).

A Word on Tempo Master

Working with TRAKTOR with the Master Clock in Auto mode, TRAKTOR will automatically set the currently used Deck to function as the Tempo Master, i.e., all other Decks and FX will be synced to that Deck. This can be undesirable when using a Deck only for, let's say, performing scratch routines. There is a setting in TRAKTOR's Transport preferences called "**Only On-Air Decks can be Tempo Master**." Deactivating this option will prevent this auto-switching behavior. For further information about Tempo Master and syncing behavior, refer to the TRAKTOR Manual.

4.1.6 Adjusting Gain

The channel **GAIN** knob is located at the top of the Z2's channel filter and EQ sections. Note that you can only adjust the gain for channels A and B using the Z2. Turning the **GAIN** knob on the hardware simultaneously moves the **GAIN** knob in the TRAKTOR software, but only if the knob is in User-Gain level viewing mode. And here's why: the button can be operated in two viewing modes: Auto-Gain level and User-Gain level.



A Gain knob in Auto-Gain level viewing mode. Pressing the orange button will switch to User-Gain level viewing mode.

Here's what the two modes display:

- **User-Gain level:** This is the default mode. A blue indicator ring around the knob shows that you are in this viewing mode. By turning the **GAIN** knob on the Z2, you change the mixer channel gain, which has a range of -inf to +12dB. This setting is not stored in your song file.
- **Auto-Gain level:** Clicking the button next to the label activates Auto-Gain level viewing mode, the label then displays **AUTO**. When on, the knob shows the Auto-Gain level stored with your song file during track analysis (upon importing the track to the Library). Changing the Auto-Gain level on the software will also write this new Auto-Gain setting to the song file.

However, turning the **GAIN** knob on the Z2, you still alter the User-Gain level, not the Auto-Gain level.

Auto-Gain can be activated in the preferences via *Mixer > Level > Set Autogain When Loading Track*. Refer to the TRAKTOR manual for further information on Auto-Gain.



Loading a not formerly analyzed track into a Deck, Auto-Gain will be automatically disabled for that Deck. Only after you reload the relevant track, the proper Auto-Gain setting will be written to the file and Auto-Gain will be enabled.

4.1.7 Pre-listening

The **HP VOLUME** knob adjusts the volume levels of the headphone output (this affects both the 1/4-inch and the 1/8-inch jacks on the Z2's front panel in the same way). The **CUE MIX** knob determines whether you hear the main mix only, the cue channel only, or both signals on your headphones.

Pre-listening to a track works the following way:

1. Load Decks A and B each with a track and begin playback (see also [↑4.1.2, Browsing and Loading](#)).
 2. Turn the **CUE MIX** knob to the center position.
 3. Adjust the **HP VOLUME** knob to a comfortable level.
 4. With the channel faders up, move the crossfader back and forth to hear one track, then the other.
 5. Move the crossfader all the way to channel A so that you are only hearing the track on Deck A.
 6. Press the Cue button **B** below the **CUE MIX** knob.
- The button lights up, showing that Deck B is now sent to the Cue channel, which you now hear in the headphones.

Notice that now, no matter where you move the crossfader, you will still hear Deck B, because its cue is on.

► Press Cue button B again to toggle it off and press Cue button **A**.

→ You will now hear the track playing on Deck A, no matter what position the crossfader is in.

You can also send only the Cue signal (without the mix signal) to the headphones or only the mix signal (without the cue signal):

1. Press both Cue buttons **A** and **B** so that they are both active (illuminated).
2. Turn the **CUE MIX** knob all the way to the left.
3. Now toggle the two Cue buttons on and off. Notice that when both Cue buttons are off, there is no signal at all coming through the headphones.
4. Press both Cue buttons so that they are on.

5. Turn the **CUE MIX** knob all the way to the right.
6. Move the crossfader from one side to the other.

Notice that now, there is no cue signal being sent to the headphones.



Remember that no matter what mix you are hearing in your headphones, the main mix is still controlled by the crossfader and channel faders.

4.2 Creating Loops and BeatJumping

The **LOOP (SIZE)** encoders give you easy access to a number of looping and BeatJumping actions.



For seamless looping and BeatJumping, make sure that Snap (**S**) and Quantize (**Q**) are activated.

To set a loop in the currently playing track:

1. Set the loop size (from 1/32nd of a beat to 32 beats) by turning the encoder. The loop size will be displayed in the respective channel display.
2. Press the encoder to begin looping at the playhead position.
3. To move the loop forward or back in the track (by increments corresponding to the loop size), press and hold **SHIFT** and turn the **LOOP (SIZE)** encoder.



With TRAKTOR's new Flux mode, you can trigger loops / cue points while preserving the track's phrasing. See [↑4.4, Flux Mode](#) for further information on Flux mode and how it affects cue points and loops.

BeatJumping (navigating through the tracks quickly and landing right on the beat) works similarly to looping. BeatJumping works whether or not a Deck is playing:

1. When not looping, set the length of the jump in beats by turning the **LOOP (SIZE)** encoder. The move size will be displayed in the respective channel display. You can jump forward or back in increments ranging from a 1/32nd of a beat to 32 beats.
2. Press **SHIFT** and turn the encoder to the right (for jumping forward) or to the left (for jumping back).

4.3 Using the Cue/Sample Trigger Buttons

The Cue/Sample Trigger buttons (1 to 4 on each side of the Z2) make it possible for you to set and delete cue points and loops, trigger Sample Slots (in Remix Decks) and BeatJump through your tracks.



For a detailed overview of these buttons' functions, refer to [↑5.4.5, Cue/Sample Trigger Section \(1, 2, 3, 4\)](#).

4.3.1 Changing Deck Focus For The Cue/Sample Trigger Buttons

The default focus of the Cue/Sample Trigger buttons is Deck A on the left side and Deck B on the right side. But you can change the Deck focus from A to C or from B to D by pressing the corresponding Deck Focus button.

To change the focus of the Cue/Sample Trigger buttons:

- ▶ Press a Deck Focus button (A or C, and B or D) to change the focus of the Cue/Sample Trigger buttons.

4.3.2 Working with Cue Points



When loading a track which has no stored loops or cue points for the first time, the first cue point will be set to the beginning of the track automatically. This is a quick way to re-cue a track to the beginning right from the Z2. You can always delete this default cue point and set the first cue point somewhere else in the track by pressing **SHIFT** + Cue/Sample Trigger button 1.

To set a cue point at the current playback position:

1. Set the Deck focus on the Z2 to the Deck containing the track where you want to set your cue point (see also [↑4.3.1, Changing Deck Focus For The Cue/Sample Trigger Buttons](#)).
2. Push an empty (not illuminated) Cue/Sample Trigger button (1 to 4). Buttons on the left of the Z2 control Decks A or C (depending on the Deck focus you have set) and the buttons on the right control Decks B or D (also depending on the Deck focus). The button lights up blue to indicate that a cue point is stored there.

→ Pressing an empty Cue/Sample Trigger button in this way will set a normal cue point in your track.

If you want to set a fade-in, fade-out, load, or Grid marker:

- ▶ Set a normal cue point first and then change it in the Deck's Advanced Panel in the software (please refer to the TRAKTOR 2 Manual for further information).



The Cue/Sample Trigger buttons light up in colors which correspond to the kind of marker that they represent. See also [↑6.2, The Z2 Audio Interface And Control Panel](#).

To delete a cue point:

1. Set the Deck focus to the Deck containing the track with cue points you wish to delete.
2. Press and hold **SHIFT** and then press the relevant Cue/Sample Trigger button containing the cue point you wish to delete. The button light will go out, indicating that it is now empty.



Activate Snap and Quantize by pressing the **S** and **Q** buttons at the top of the Z2 panel to get a seamless Hotcue jump.



With TRAKTOR's new Flux mode, you can trigger loops / cue points while preserving the track's phrasing. See [↑4.4, Flux Mode](#) for further information on Flux mode and how it affects cue points and loops.



You can change the behavior of the Cue/Sample Trigger buttons' secondary functions in TRAKTOR's preferences. See also [↑5.4.5, Cue/Sample Trigger Section \(1, 2, 3, 4\)](#).

4.3.3 Working with Loops

Storing loops with the Z2 is as easy as setting cue points. The only difference is that a loop must be active in order to store it. To store a loop on one of the Cue/Sample Trigger buttons (**1** to **4**):

1. Set the Deck focus on the Deck containing the track where you want to store a loop (see also [↑4.3.1, Changing Deck Focus For The Cue/Sample Trigger Buttons](#)).
2. With the **LOOP (SIZE)** encoder, set the length of the loop. The loop length is indicated on the Loop Size display.
3. Press the **LOOP (SIZE)** encoder to activate the loop.

4. Press an empty (unlit) Cue/Sample Trigger button.
- The button lights up green, to indicate that a loop is stored there.



Both the loop start point and the loop length are stored this way. When you trigger a stored loop, you can change its current length while it is looping, but the actual markers will remain unchanged. If you want to change the actual markers (the start point and loop length), you will have to delete the loop and then reset it with the desired position and length with the Cue/Sample Trigger buttons. For more details about loops, see the TRAKTOR manual.

To delete a loop stored to a Cue/Sample Trigger button:

- ▶ Press **SHIFT** and then the corresponding Cue/Sample Trigger button.
- The button will now no longer be lit and can be used for another loop or cue point.



With TRAKTOR's new Flux mode, you can trigger loops / cue points while preserving the track's phrasing. See [↑4.4, Flux Mode](#) for further information on Flux mode and how it affects cue points and loops.



You can change the behavior of the Cue/Sample Trigger buttons' secondary functions in TRAKTOR's preferences. See also [↑5.4.5, Cue/Sample Trigger Section \(1, 2, 3, 4\)](#).

4.3.4 Controlling Remix Decks

When the Deck Flavor is set to Remix Deck, the Cue/Sample Trigger buttons function as Sample Slot triggers and show the color of the focused Sample Cell within the Remix Deck.



You can change Deck Flavors within the TRAKTOR software by pressing on a Deck's Deck letter and selecting your Deck Flavor of choice. Please refer to the TRAKTOR Manual for further instructions.

When you load a Remix Deck, the top row of samples in the four Sample Slots will be controlled by the Cue/Sample Trigger buttons. If the Deck is stopped when a Remix Deck is loaded, hitting any of the four Cue/Sample Trigger buttons will trigger the Sample Slot and start the Deck. Once the Deck is playing, repeatedly pressing the buttons will toggle the Mute state of the Sample Slot on and off.

Triggering a Remix Deck and toggling mute/unmute:

1. Make sure Deck A is stopped.
2. Set the Deck A to the Remix Deck flavor.
3. Load a Remix Set into Deck A.
4. Press one of the four Cue/Sample Trigger (1 to 4) buttons and the Deck will start playing the sample in the corresponding Sample Slot.
5. Press the other buttons to hear the other samples.
6. Press one of the buttons a second time to toggle the mute state (the Sample Slot playhead continues to move in the sample, but the sound is muted). The button blinks to indicate that the Sample Slot is muted.
7. Press the blinking button again to unmute.



You can change the behavior of the Cue/Sample Trigger buttons' secondary functions in TRAKTOR's preferences. See also [§5.4.5, Cue/Sample Trigger Section \(1, 2, 3, 4\)](#).

4.4 Flux Mode

What is Flux Mode? Flux mode lets you jump to cue points and loops without losing the phrasing of your tracks. It is a timeline-based transport technique that lets you interact with TRAKTOR's transport controls and then immediately jump back to the position of the timeline where the track *would have been* if the transport action had not been used in the first place. In other words, it is as if a second, virtual playhead continues forward in your song while TRAKTOR loops or jumps to a cue point. When you release the loop (or cue point) — by releasing the relevant Cue/Sample Trigger button (1 - 4) — playback resumes at this playhead position. The longer you loop, the farther ahead the playhead position will move and therefore the farther ahead playback will jump to when you release the Cue/Sample trigger button. The virtual Flux mode timeline is represented by a green playhead in the waveform view. Additionally, a [Flux Mode](#) indicator will flash in the Deck Header.



While playing the track from a stored cue point, the virtual timeline is indicated with the extra green playhead, and the Flux Mode indicator flashes in the Deck Header.

To toggle Flux mode on Deck A:

- Press the Flux button on the left of the Z2; to toggle Flux mode on Deck B, press the Flux button on the right.



Note that Flux mode is Deck-specific. In other words, you can have Deck A in normal mode and Deck B in Flux mode at the same time.

For further information about Flux mode, please see the TRAKTOR manual.

4.5 Filter and EQ Knob Snap

The Z2's **FILTER** and EQ knobs are pretty much self-explanatory. However, there is a feature that is worth checking out which lets you create a classic "jump cut" filter or EQ effect:

1. With a track playing in Deck A, turn the **FILTER** knob to the right (to cut the low end). As you turn the knob, you will hear the lower frequencies being gradually cut off.
2. Now press and hold **SHIFT** while turning the **FILTER** knob back to the center position. As you turn the knob, you won't hear any difference.
3. When the knob is back in the center position, release the **SHIFT** button.

- What happened? When you released the SHIFT button, the filter "snapped" (or "jumped") back to the center (neutral) position, with no smooth transition. You can use this **SHIFT + turn** technique on the EQ band knobs (**HI**, **MID**, **LOW**) as well as the **FILTER** knobs.

4.6 Macro FX

The Z2's compact **MACRO FX** section lets you control any of TRAKTOR's effects from the hardware. In the following section, we are going to focus on using the Macro FX, which are especially well-suited to the Z2.



Using TRAKTOR's traditional (non-Macro) FX, the **FX** knob on the Z2 will control an FX Unit's third parameter in Single mode, and the first effect in the chain in Group mode. Refer to the TRAKTOR Manual for further information FX Units and their modes.

What are Macro FX?

Macro FX are in fact multiple effects controlled by a single knob. They are carefully designed by leading sound designers and producers and consist of a combination of "stacked" FX. The amount of each of the component effects varies with the position of the FX knob on the Z2, allowing you to quickly and easily add sophisticated effects to your performances.



You'll find a complete description of the Z2's FX section in [↑5.4.2, MACRO FX Sections](#).

Follow the steps below to get an idea of how powerful this feature is:

1. Load a track in Deck A.
2. Press **SHIFT + A (REL / INTL)** to start the track.
3. Just under Deck A's **FILTER** knob are the **FX** assign buttons. Press button **1**.
4. Press and hold **SHIFT** and rotate the **FX** knob at the same time. On the TRAKTOR software, you will see the effects name change as you turn the **FX** knob. Stop on one of the Macro FX (prefixed with "M").
5. Activate the effect by pushing the **ON** button under the **FX** knob.
6. Turn the **D / W (Dry/Wet)** knob towards the right until you can clearly hear the effect.
7. Slowly rotate the **FX** knob — you will hear a smooth transition between the different positions of the Macro FX preset.



It is a good idea to try out all the different Macro FX so that you can get familiar with the wide range of possibilities available. Some of them are more appropriate for certain styles than others — try them all to get an idea! In addition, you can choose which effects you want to have available in TRAKTOR's effects list (maybe you only need three or four different effects for your set) in TRAKTOR's preferences. See also [↑5.4.2, MACRO FX Sections](#).



Note that for Decks C and D, the FX buttons must be on in order for the sound coming from the Deck to be routed into the assigned FX unit. See also [↑5.4.11, FX Assign Buttons \(1, 2\)](#).



Note that for Decks C and D, the FX buttons must be on in order for the sound coming from the Deck to be routed into the assigned FX unit. See also [↑5.4.11, FX Assign Buttons \(1, 2\)](#).

4.7 Using Additional Controllers

The Z2's built-in USB hub makes it very easy to connect external USB devices, such as hard drives (or even thumb drives with your track collections) or additional controllers. Using the Z2 in conjunction with the TRAKTOR KONTROL X1 will give you more flexibility with controlling TRAKTOR, especially if you use effects quite heavily.

The TRAKTOR KONTROL F1 is particularly well-suited to be used with the Z2. Since the F1 provides access to the deepest aspects of TRAKTOR's Remix Decks, connecting one or two F1's to the Z2 will give you the ultimate mixing — and RE-mixing — experience.

4.8 Customizing the Z2

If you wish to remap the Z2's controls to other functions, you can create your own controller template using the Native Instruments Controller Editor, which is installed with the TRAKTOR software. In addition, it is now possible to simply modify the factory map with mapping overrides instead of starting from scratch, when you might only want to change one or two knob assignments. For more information, see the documentation included with the Controller Editor software.

5 TRAKTOR KONTROL Z2 Hardware Reference

5.1 Introduction

This chapter details the use of each element on your TRAKTOR KONTROL Z2. Like any important piece of audio hardware, it is a good idea to get familiar with the Z2 in order to make the most of this highly versatile mixer and controller. Although the Z2 is very intuitive and easy to use, many of its controls have multiple functions — especially with regards to controlling the TRAKTOR software.

After a quick introduction to the main areas on your Z2, we will give you a thorough description of each control, input, and output element on your Z2.

In this chapter, we refer to the Z2 in TRAKTOR mode, unless noted. In other words, we assume that the Z2 is connected to a computer with the TRAKTOR software installed and running. For specific Direct mode operation, please see the section [↑3, Using the Z2 as a Stand-alone DJ Mixer \(Direct Mode\)](#).



Nearly every action you carry out on your Z2 is instantly mirrored in TRAKTOR when you are using the Z2 with the TRAKTOR software. Although the Z2 is an excellent stand-alone mixer, the full feature set comes to life when both software and hardware are used together. For an in-depth explanation of all features provided by the TRAKTOR software, please refer to the TRAKTOR Manual.

A Word about TRAKTOR...

If you are not already a proficient TRAKTOR user, you might want to refer to the TRAKTOR Manual as you read this chapter. If you are completely new to TRAKTOR, it is a good idea to work through some of the tutorials in the TRAKTOR Manual, or the TRAKTOR Getting Started guide — they can be an enjoyable way to quickly learn how to use TRAKTOR effectively!

We assume that you have a basic understanding of many TRAKTOR concepts such as Decks, Deck Flavors and configurations, looping, cue points, and so on. In addition, you should understand how TRAKTOR's mixer and effects (FX) work.

Of course, you can operate the Z2 without using TRAKTOR's rich feature set. But you will certainly be rewarded for taking a little time to learn more about the TRAKTOR software so that you can get the most out of the Z2 as well.

5.2 Rear Panel



The Z2's rear panel.

The rear panel is where you'll connect all the inputs and outputs for your setup and this is, in many ways, the most important thing to "get right."

5.2.1 AC Power



The power switch and the jack on the rear panel.

- **Power Switch:** Switches the TRAKTOR KONTROL Z2 on/off.
- **Power Jack:** Plug in a standard IEC C14-type connector power cord (included) here.



The Z2 can be powered by any stable AC source (50-60 Hertz) between 115 and 230 Volts.

5.2.2 USB Connections



The USB connectors on the rear panel.

Connects the Z2 to your computer with the included USB cable. In addition, the Z2 has a built-in two-port USB hub for any peripheral devices, such as additional controllers or hard drives, for example.



The USB port (Type B) connection to your computer is specially-designed to withstand particularly demanding (party!) performance situations. When plugging your USB cable into the rear panel of the Z2, you'll notice this extra-tight grip to prevent accidental slippage.



For an overview of the Z2's internal USB routing, refer to [↑6.6, Virtual USB I/O Routing](#).

5.2.3 OUTPUT Section



The OUTPUT section on the rear panel.

The Z2's **OUTPUT** section offers a number of different output connections which cover just about any typical setup situation. Both **MAIN OUT** outputs are controlled by the **MASTER** knob on the top panel. The **BOOTH** outputs are controlled by the **BOOTH** knob on the top panel.

MAIN OUT

- **Balanced XLR:** The balanced XLR outputs allow you to connect professional-grade cables which are much more resistant to electrical interferences than unbalanced cables, especially over longer distances.
- **Unbalanced RCA:** The RCA outputs give you extra flexibility for connecting to another mixer or recording device.

BOOTH

The quarter-inch balanced **BOOTH** outputs give you a pair of separate outputs, useful for monitoring for example. You can adjust the level of the **BOOTH** output with the **BOOTH** knob (see also [↑5.4.22, OUTPUT Section](#)), located just below the **MASTER** knob, in the upper right corner of the Z2's top panel.



Use the **BOOTH** outputs for stage (or DJ booth) monitor speakers or for sending your sound to another musician on stage (for live performance effects, for example). Since you can independently adjust the levels of both the **MAIN/MASTER** and the **BOOTH** outputs, you have a lot of flexibility with these two sets of outputs.

5.2.4 INPUT Section



The INPUT section on the rear panel.

The channel **INPUT** section is where you'll be connecting your physical Decks (turntables or CD players) to the Z2.

- **PHONO** Inputs: Connect a turntable (with Timecode or standard vinyl) to the **PHONO** channel inputs. For a more detailed description, please read the separate Setup Guide as instructed in [↑1.3.1, The Setup Guide](#).
- **LINE** Inputs: The **LINE** inputs are for connecting CD players (timecode or standard CD) and other standard audio devices which provide line-level output levels, including most portable recorder/players (for a more detailed description, please read the separate Setup Guide as instructed in [↑1.3.1, The Setup Guide](#)).



Note there are two basic modes the Z2 can be operated in: TRAKTOR mode and Direct mode. In TRAKTOR mode, the Z2's channels will control TRAKTOR's software Decks. In Direct mode the mixer will work stand-alone and the software will be bypassed. To activate TRAKTOR mode and, hence, enable Timecode control of TRAKTOR Decks, press the TRAKTOR buttons next to the phono/lines switches on the top panel of the Z2 so that they are lit. You can also mix these modes and have one channel operating in Direct mode while the other is running in TRAKTOR mode. See also [↑3, Using the Z2 as a Stand-alone DJ Mixer \(Direct Mode\)](#) and [↑4, Using the Z2 with TRAKTOR \(TRAKTOR Mode\)](#).

5.2.5 AUX / MIC Section



The AUX / MIC section on the rear panel.

- The **AUX** input is for connecting a standard line-level source such as an MP3 player or CD player. Like the **MIC** input, the **AUX** input is sent straight to the output summing bus after passing through the tone EQ stage, which is controlled by the **TONE** knob on the Z2's top panel (see also [↑5.4.1, AUX / MIC Controls](#)). (For a more detailed description of connecting equipment via aux inputs, please read the separate Setup Guide as instructed in [↑1.3.1, The Setup Guide](#).)
- The **MIC** input lets you connect a microphone to the Z2. The signal is sent straight to the Master outputs and is equally distributed between the left and right channels (for a more detailed description, please read the separate Setup Guide as instructed in [↑1.3.1, The Setup Guide](#)).

Both **MIC** and **AUX** inputs can be used simultaneously — they are simply mixed together and sent through the tone EQ stage and then through to the outputs. The signal does not pass through any of TRAKTOR's FX or through the Z2's channel EQs or Filters.

The **MIC** input can be muted with the on/off switch (see also [↑5.4.1, AUX / MIC Controls](#)) on the top panel.

5.2.6 GND (Ground) Screws



The ground screws on the rear panel.

Use the ground screws to earth the turntables you connect to the Z2 in order to prevent unwanted hum and other unwanted sounds resulting from ungrounded circuits.

5.2.7 Kensington Lock Port



The Kensington lock on the rear panel.

Obviously, you'll want make sure no one "accidentally" walks off with your Z2!

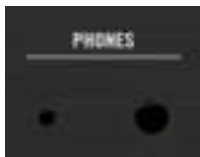
5.3 Front Panel



The Z2's front panel.

The front panel consists uniquely of headphone and crossfader elements.

5.3.1 PHONES Section



The PHONES sockets on the front panel.

The Z2 lets you connect two sets of headphones at the same time. The output specs of the PHONES jacks are identical, only their size differs.

- Large headphone jack: For 1/4-inch stereo headphone plugs.
- Small headphone jack: For 1/8-inch stereo headphone plugs.



Adjust the levels for both headphone jacks with the HP VOLUME knob on the Z2's top panel.

5.3.2 XF REVERSE Switch



The XF REVERSE switch on the front panel.

You can invert the crossfader. When XF REVERSE is ON, an indicator will illuminate at the bottom of the level meter display on the top panel, and the crossfader's mixer channel assignments will be swapped.

In TRAKTOR mode this will also work; activating XF REVERSE will then switch the software's crossfader assignments.

5.3.3 XF CURVE Knob



The XF CURVE knob on the front panel.

You can change the type of crossfader curve with this knob. Turned all the way left, the curve gives a smooth blend between the channels. Turned all the way right, it gives you an on/off "cut" style blend. This works the same way both for the Z2 in Direct mode and for the software in TRAKTOR mode.

5.4 Top Panel

The vast majority of the time you spend with the Z2 will involve using the top panel controls. The Z2's hybrid technology lets you use it as a stand-alone DJ mixer (Direct mode) and as TRAKTOR controller (TRAKTOR mode). You can even mix one channel in Direct mode, and at the same time you are mixing the other channel in TRAKTOR mode. In addition, you can combine traditional vinyl (or CD) mixing with TRAKTOR Timecode mixing.

The following section describes all of the controls and displays on the Z2's top panel — learning these functions is the key to mastering the Z2!

5.4.1 AUX / MIC Controls



The AUX / MIC control section on the top panel.

The Z2 lets you connect a microphone and use it either to feed a microphone signal right into your mix (with an MC, for example), or even to use it as a live input into TRAKTOR. All the mic settings on the Z2 remain unchanged when you switch between Direct and TRAKTOR mode. See also [↑5.4.8, TRAKTOR Buttons](#) for an explanation of TRAKTOR mode and Direct mode.

In addition to a microphone, you can connect an audio device such as an MP3 player or other external device that outputs standard line-level audio.



The Mic/Aux inputs are mixed directly into TRAKTOR's (or the Z2's) main outputs, regardless of the mixer's crossfader position.



Use the microphone input to make voice or instrument loops on-the-fly using TRAKTOR's Loop Recorder. Make sure to set the source to capture at EXT (external) in the TRAKTOR preferences (for more information on the Loop Recorder, please refer to the TRAKTOR Manual).

- **Microphone button:** This button activates the mic input. When on, the button lights up brightly.



Note that the Mic On/Off button does not *toggle* between the Mic and Aux inputs — it only *adds* the microphone signal to the auxiliary signal, if there is one present.

- **VOLUME** knob: Use this to adjust the combined mic and aux volume level.
- **TONE** knob: This is a simple, but effective "one-knob" tone control. Turn towards the right to emphasize higher frequencies (and attenuate lower ones) and towards the left to emphasize lower frequencies (and to attenuate higher ones).



The TONE knob can be a quick-fix to possible feedback problems resulting from using a microphone on stage.

5.4.2 MACRO FX Sections



The MACRO FX control section on the top panel.

The **MACRO FX** sections — one on each channel — are designated Macro FX controls for the Macro FX in the TRAKTOR software (see also [↑4.6, Macro FX](#) for information about Macro FX); however, you can also control other effects' parameters with the MACRO FX controls, in which case the FX knob will control the effect's third parameter in Single mode, and the first effect in the chain in Group mode.

In order for any effect to be audible, the relevant FX Unit needs to be activated for the channel via its FX Assign button (see [↑5.4.11, FX Assign Buttons \(1, 2\)](#)).

- **D / W** knob: Controls the amount of FX signal (Dry/Wet). Turning this knob completely to the left results in a completely dry (no FX) signal; turning it completely to the right produces the full amount of effect.
- **FX** knob: This knob controls the effects mix of the Macro FX in TRAKTOR. The effect will vary according to the particular Macro FX preset you have loaded and the position of this knob. For Non-MACRO-FX (the ones without an **M** in front of their name), the FX knob works the following way: if the TRAKTOR FX mode is set to Single mode, the FX knob on the Z2 will control the right-most FX parameter knob on the TRAKTOR software. This is generally the knob which is most performance-oriented. In Group FX mode, the Z2's FX knob will control the left-most knob FX knob (the "first" effect in the Group) on the TRAKTOR software. Press and hold **SHIFT** while rotating the **FX** knob to change the effect loaded into TRAKTOR.



You cannot change between single and group effect type from the Z2 hardware — you have to do this in the TRAKTOR software. However, you *can* change the actual effect by pushing **SHIFT** and turning the **FX** knob at the same time. At the bottom of the list (**FX** knob turned towards the right) are all the Macro FX. In other words, if you are in Single FX mode, you can choose any single effect and Macro FX. If you are in Group FX mode, you can choose any group effects and Macro FX. Either way, you can access all of TRAKTOR's Macro FX in this way!

- **ON (PRE / POST)** button: Toggles the selected FX on and off. Press and hold **SHIFT + ON (PRE / POST)** to set the effect from Insert mode to Post Fader mode and vice versa. In Insert mode, the effect is inserted into the signal chain right before the channel filter. In Post Fader mode, the effect is inserted into the signal chain **after** the channel's volume fader so it will still be audible when turning down the volume on a channel.



TRAKTOR's Macro FX give you a very fast and easy way to add complex effects to your mix. Try out the different Macro FX presets in TRAKTOR to get an idea of the potential for your tracks!

Preparing Your Effects List

You can limit your FX choice in TRAKTOR *Preferences > Effects > FX Pre-Selection* to make it easier to choose between only a handful of your favorite effects. In addition, the order of the FX on this list depends on the order you add them. This way, if you put three FX in your "FX

Pre-Selection" list in the preferences, the first one can be selected from the Z2 by turning the **FX** knob (while pressing **SHIFT**) all the way to the left, the second one when the knob is in the middle, and the third one when the knob turned is all the way to the right.

5.4.3 DECK C and DECK D Knobs



The DECK C volume knob on the top panel.

Use these knobs to adjust the volume for Decks C and D.



The Indicator labels under the knobs ("DECK C" and "DECK D") have an integrated light-intensity function: the light intensity varies according to the amplitudes of the sounds playing through the respective Decks. This way, even if the volume knob (representing the Deck fader in the TRAKTOR software) is turned all the way down, you can still see if the Deck is playing.



By default, the outputs of Decks C and D are mixed directly to the main output and bypass the crossfader. On the TRAKTOR software, it is possible to change what channels are affected by the crossfader by clicking on the crossfader assign letters left and right of the crossfader (refer to the TRAKTOR manual for further information).

5.4.4 LOOP (SIZE) Encoders


Encoders



The left LOOP (SIZE) encoder on the top panel.

These encoders control a number of looping and moving (BeatJumping) functions in TRAKTOR, as described in the following table:

Action	Result
Rotate encoder	Increases or decreases the loop size
Press encoder	Creates a loop of the specified size, starting at the current playing position. The Loop Size display flashes when the loop is active. If a loop is already active, Loop mode will be deactivated.
Hold SHIFT and rotate encoder while looping	Moves the position of the active loop by the size amount.
Hold SHIFT and rotate encoder while NOT looping	BeatJump the current track in forward or back (depending on rotation direction) in current loop sized jumps. For example, turning to the right when the loop size is set to 4 will BeatJump forward by four beats.
Hold SHIFT and press encoder while looping	Stop looping (Same as pressing encoder without SHIFT while looping).
Hold SHIFT, press and hold encoder and turn to the left	Reset Deck's beatline to the start. This returns the track to the beginning.



Holding the **SHIFT** button while pressing and turning the **LOOP (SIZE)** encoder left is a quick and easy way to "reset" your track to the very beginning, even if you have no cue points set there.

Loop Size Displays



One of the 7-segment displays displaying a loop/move size on the Z2.

The displays display the loop (or move) length as a number. The displays blink when the associated track is looping. In addition, they display various options when you press the Z2's Settings button ([↑5.4.13, Status/Mode Indicators](#)).

5.4.5 Cue/Sample Trigger Section (1, 2, 3, 4)

The Cue/Sample Trigger section allows for controlling cue points in a Track Deck and Sample Slots in a Remix Deck. The Deck Focus buttons (C,A, and B,D) select the Deck to be controlled by the Cue/Sample Trigger buttons; the Cue/Sample Trigger buttons (1 to 4) then control the underlying Deck's cue points / Sample Slots.

In this chapter you will find a description of the Cue/Sample Trigger section and its controls. A description of their LED color illumination states can be found in [↑6.2, The Z2 Audio Interface And Control Panel](#).

In the TRAKTOR preferences, you can also assign alternative secondary functions to the Cue/Sample Trigger buttons. A description of these options can be found in [↑6.4, Cue/Sample Trigger Buttons: Optional Secondary Functions for Track Decks](#) and [↑6.5, Cue/Sample Trigger Buttons: Optional Secondary Functions for Remix Decks](#).

For a tutorial on using the Cue/Sample Trigger section, refer to [↑4.3, Using the Cue/Sample Trigger Buttons](#).

Deck Focus Buttons



The Deck Focus buttons C and A above the left Cue/Sample Trigger section on the Z2.

These buttons let you select the Deck focus of the four Cue/Sample Trigger buttons located just below. On the left side, you can switch between Decks A and C, and on the right side between B and D. Using **SHIFT** with these buttons lets you access the secondary controls of the Cue/Samples Trigger buttons. The flashing Deck Focus button indicates that the buttons are in secondary mode.



If one of the Focus buttons is lit or flashing, holding **SHIFT** and pressing the other Focus button will switch both the Deck focus and will enter secondary mode at the same time.


You can determine the secondary mode behavior in the Z2 tab in TRAKTOR's preferences. E.g., by default, the Cue/Sample Trigger buttons on a Track Deck control cue points 5-8 in secondary mode. A description of the available alternative secondary funtions can be found in [↑6.4, Cue/Sample Trigger Buttons: Optional Secondary Functions for Track Decks](#) and [↑6.5, Cue/Sample Trigger Buttons: Optional Secondary Functions for Remix Decks](#).

On a Remix Deck, you can press and hold the Deck's focus button to override the Loop Encoder's function with a "Capture Source Select" option. The Remix Decks will capture from the "above" Deck by default. In other words, Deck C will capture from Deck A and Deck D will capture from Deck B. The Loop Size display will then indicate the Capture Source.

To change the Capture Source:

- ▶ Press and hold the Deck Focus button of a Remix Deck and turning the Loop Size knob of that channel

Indication on Loop Size display	Capture Source
c_A	Capture from Deck A
c_b	Capture from Deck B
c_C	Capture from Deck C
c_d	Capture from Deck D
c_L	Capture from the Loop Recorder



You can only capture audio from the Loop Recorder or a Track Deck — you cannot capture from a Live Input (use the Loop Recorder for that) or another Remix Deck. Therefore, the options that you see on the Loop Size display will depend on how many Track Decks you have (the Loop Recorder option is always available).

Cue/Sample Trigger (1-4) Buttons



The Cue/Sample Trigger buttons 1 to 4 for Decks A and C.


The function of the Cue/Sample Trigger buttons depends on the underlying Deck Flavor:

- **For Track Decks**, the four buttons control HotCue/loops 1-4 in primary mode and HotCue/Loops 5-8 in secondary mode (by default).



You can change the secondary mode behavior in TRAKTOR's preferences in the TRAKTOR KONTROL Z2 tab, under "Secondary Cue." Here you can determine the behavior for both Track Decks and Remix Decks. See also [↑6.4, Cue/Sample Trigger Buttons: Optional Secondary Functions for Track Decks](#) and [↑6.5, Cue/Sample Trigger Buttons: Optional Secondary Functions for Remix Decks](#).

- **For Remix Decks**, the four Cue/Sample Trigger buttons correspond to the four Sample Slots in the Remix Deck and control the Mute/Play state of each of the four Slots. If the Remix Deck is stopped, pressing one of the four buttons starts the Deck and plays the corresponding Sample Slot. When the Remix Deck is playing, pressing one of the buttons will toggle the Mute/Play state of the corresponding Sample Slot. The Cue/Sample Trigger buttons light up with the same color as the currently playing Sample Cell in the Remix Deck.



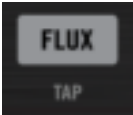
You can change the secondary mode behavior in TRAKTOR's preferences in the TRAKTOR KONTROL Z2 tab, under "Secondary Cue." Here you can determine the behavior for both Track Decks and Remix Decks. See also [↑6.4, Cue/Sample Trigger Buttons: Optional Secondary Functions for Track Decks](#) and [↑6.5, Cue/Sample Trigger Buttons: Optional Secondary Functions for Remix Decks](#).

An overview of the Cue/Sample Trigger buttons' functions:

ACTION	RESULT
Track Deck (Primary Mode) Press	If no cue or loop is stored in the slot, a cue point will be set or a loop will be stored (if in a loop). If there is a cue or loop stored in the slot, pressing will jump to the saved cue or loop.
Track Deck (Primary Mode) SHIFT + Press	If no cue or loop is stored in the slot, nothing happens. If a cue or loop is stored in the slot, it will be deleted.
Track Deck (Secondary Mode) Press	The four buttons work the same as they do in primary mode, but they control HotCue/loops 5-8
Track Deck (Secondary Mode) SHIFT + Press	The four buttons work the same as they do in primary mode, but they control HotCue/loops 5-8
Remix Deck (Primary Mode) Press	If there is no Sample loaded in the slot, a Sample will be captured from the selected Track Deck with the length of the Track Deck's loop size. If there is a Sample playing unmuted, the slot will be muted If there is a Sample playing muted, the Sample Slot will be unmuted If there is a stopped Sample in the Slot, the Sample will start playing and be unmuted.

ACTION	RESULT
Remix Deck (Primary Mode) SHIFT + Press	If no Sample is loaded in the Slot, this will load the currently selected entry in the browser If a Sample is loaded into the slot and playing, this will stop the playing. If a Sample is loaded into the Sample Slot and stopped, this will unload the Slot.
Remix Deck (Secondary Mode) Press	Retrigger the selected Sample Slot
Remix Deck (Secondary Mode) SHIFT + Press	If no Sample is loaded in the Sample Slot, this will load the currently selected entry in the browser. If a Sample is loaded into the Sample Slot, this will stop it.

5.4.6 FLUX Buttons



The left FLUX (TAP) button on the top panel.

To toggle back and forth between Flux mode and normal mode, press the **FLUX (TAP)** button on either channel. By pressing **SHIFT** at the same time, the **FLUX (TAP)** buttons blink at the current Deck's tempo. See [↑4.4, Flux Mode](#) for further information about Flux mode.

Tap Tempo

To tap the tempo of Deck A or B:

- ▶ Press and hold **SHIFT** and then tap the channel's **FLUX (TAP)** button at the desired tempo.

5.4.7 Phono/Line Switches (PH / LN)



Deck A's phono/line switch to the left of the TRAKTOR mode button.

These switches let you choose the analog input source for the TRAKTOR KONTROL Z2. There are two main stereo channel inputs on the Z2, and each has separate phono and line inputs. The switch determines which of the two inputs will be fed into the mixer channel (the Z2's internal mixer) and fed up to the computer via USB (for Timecode input or for use in a Live Input Deck).

5.4.8 TRAKTOR Buttons



Channel A's TRAKTOR button to the right of the phono/line switches.

This is a very vital control. The TRAKTOR button activates TRAKTOR mode for the corresponding mixer channel, which means that the audio entering this channel is being sent to TRAKTOR, and not handled internally in the Z2 (Direct mode). TRAKTOR mode is the mode for Timecode control of TRAKTOR Decks.

When the button is off (not illuminated), all audio coming into the channel is processed by the Z2. The channel then operates in Direct mode. This means that gain, EQ, volume, and pre-listening are all done independently of TRAKTOR.



You have no control of the TRAKTOR software on a channel in Direct mode, since the actual audio processing is carried out by the Z2 internally.



You can literally switch between Z2 hardware mixing and TRAKTOR mixing on-the-fly, without any glitches. This gives you a great deal of flexibility.

Deck Flavor Toggle

The TRAKTOR buttons can also be used to toggle to the Live Input flavor and then back to the previous Deck flavor. For example, if Deck A is currently a Track Deck and you wish to use it as a Live Input Deck to capture some audio on-the-fly, hold **SHIFT** and press a TRAKTOR button; the Deck flavor will switch to a Live Input Deck. When you are finished and want to use the Deck as a Track Deck again, just push **SHIFT** and the TRAKTOR button again to toggle back.

5.4.9 GAIN Knobs



A channel's GAIN knob on the top panel.

These knobs control both TRAKTOR's User-Gain level and the Z2's internal direct gain simultaneously. Note that these knobs only control the gain of Decks A and B. It is not possible to control the channel gain of Tracks C and D directly from the Z2. See also [↑5.4.3, DECK C and DECK D Knobs](#).

5.4.10 EQ (HI, MID, LOW) and FILTER Controls



A channel's EQ (HI, MID, and LOW) and FILTER knobs on the top panel.

Just below the **GAIN** knob at the top of each of the Z2's channels, you will see three EQ knobs (**HI**, **MID**, and **LOW**) and a **FILTER** knob. The Z2's high-quality filter and EQ section gives you a fast and easy way to adjust for frequency imbalances, but also gives you quick access to filter and EQ effects.



You can "drop" a filter (or an EQ band) in or out of the mix by using the SHIFT button. See also [↑4.5, Filter and EQ Knob Snap](#).



The Z2's internal EQ type is exactly like the "P900 KILL" in TRAKTOR software. When used as a standalone mixer (no connection to the TRAKTOR software), this will always be the EQ type used. By default, this is also the EQ type in TRAKTOR as well, so when using the Z2 to mix in TRAKTOR, you will notice absolutely no change in the sound of the EQ. However, in the TRAKTOR preferences you can change the EQ type in the Mixer tab.

HI-EQ Knobs

The **HI**-EQ knobs control the high equalizer band of the channel both in the TRAKTOR software and in the Z2 simultaneously. The center position corresponds to 0dB and provides no boost or cut to the frequency band.

MID-EQ Knobs

Similarly, the **MID**-EQ knobs control the mid-range band of the associated channel, both in the TRAKTOR software and in the Z2 simultaneously. The center position corresponds to 0dB and provides no boost or cut to the band.

LOW-EQ Knobs

Just like the **HI** and **MID**-EQ knobs, the **LOW**-EQ knobs also control their respective frequency bands — in this case the low band. The center position of the **LOW**-EQ knobs also have no effect on the sound: 0dB with no boost or cut in the low band.

Filter Knobs

The two **FILTER** knobs give you a one-knob control of a pair of perfectly-matched filters: a low pass (turning to the left of the center position) and a high pass (turning to the right of the center position) filter. Like the EQ knobs, the center position corresponds to 0dB and has no effect on the sound.



If the Z2's hardware knobs ever appear to be off center with regards to what the TRAKTOR software is showing, you can always recalibrate them easily. To do this, go into TRAKTOR's preferences and open the Z2 tab.

5.4.11 FX Assign Buttons (1, 2)



A Deck's FX assign buttons for FX Units 1 and 2.

The FX Assign buttons route the associated Deck (A or B) to either or both of TRAKTOR's FX.

Pressing **SHIFT** + the **FX** buttons assigns the lower Decks (C and D) to their respective FX Units in TRAKTOR.



Although the Z2 has its own great-sounding filters and EQs, the FX are not internal — they are not available in standalone mode. Therefore, to use TRAKTOR's FX, you'll need to be in TRAKTOR control mode.

By default, TRAKTOR's FX routing is "post fader," which means that the effect is not affected by the channel fader position. For example, if you have a channel assigned to a reverb effect, bringing the channel fader down will not change the reverb volume. This is very useful for "fade to delay" or "fade to reverb" situations. You can always change to Insert mode if you prefer to control the effects level with the channel faders. See the TRAKTOR Manual for further reference on Insert and Post Fader modes.

5.4.12 7-Segment Displays



One of the 7-segment displays displaying a loop/move size on the Z2.

The 7-segment displays are used for displaying information about loop/move size, and settings options. For further information, refer to [↑5.4.4, LOOP \(SIZE\) Encoders](#) and [↑5.4.13, Status/Mode Indicators](#).

5.4.13 Status/Mode Indicators



The status/mode indicators and the S (Snap), Q (Quantize), and Settings buttons below.

The three icons at the very top of the center panel of the Z2 tell you important operating status information. There are three different LED indicators: alert symbol, USB symbol, and the Timecode symbol. The following table describes the messages:

INDICATOR	MEANING
Alert symbol	Low RAM, flashes at a one-second interval
USB symbol	No connection to computer: Dim state Controller action being triggered: Flashing Connection established: Brightly lit
Timecode symbol	Failed Timecode calibration: Blink (one second interval) Low input level: Fast blink (0.5 second interval) Ground hum detected: Fast blink (0.5 second interval) Left or right channel missing: Fast blink (0.5 second interval)

5.4.14 S (Snap), Q (Quantize), and Settings Buttons



The S (Snap), Q (Quantize), and Settings buttons with the status/mode indicators above.

Just under the status/mode indicators are three small, but important buttons.

- **S (Snap):** Pressing the Snap on/off button toggles TRAKTOR's global Snap feature on or off. When global Snap is on, the button also lights up blue and is off when Snap is off.
- **Settings button:** The Settings button toggles the Settings mode on and off. This only works when TRAKTOR is connected (i.e., not when you use the Z2 in Direct mode; see also [↑5.4.8, TRAKTOR Buttons](#)). The Settings button blinks on and off when the Settings mode is active. There are three different sets of parameters which you can control in Settings Mode: **Timecode Parameters**, **LED Meter Parameters**, and **Layout Parameters**. You can switch between the three different kinds of parameters by turning the left **LOOP (SIZE)** encoder. See the sections below for a description of the parameters.
- **Q (Quantize):** The Quantize button activates/deactivates the global Quantize in TRAKTOR. When the button is on (blue), global Quantize is engaged and when the button not lit, global Quantize is also off.

Timecode Parameters

See the Settings button's +description above to see how to enter this Settings mode. The Timecode Parameter is shown by "tC" on the left LED display. The right display gives you a number of options:

- **Calibrate Deck A:** This is represented by "C_A" on the right LED display. You can trigger the calibration for Deck A by pressing the right **LOOP (SIZE)** encoder.
- **Calibrate Deck B:** The right display shows "C_b". Press the encoder to trigger calibration for Deck B.
- **Deck Swap:** The right display shows the current configuration which is "A_b" by default. To swap Decks A and B, just press the right **LOOP (SIZE)** encoder and it will display "b_A". Press again to toggle back to the previous state.
- **Reset:** The right display shows "rES". Press the right **LOOP (SIZE)** encoder to reset all input and output routing configurations to their default values.

LED Meter Parameters

See the Settings button's description above to see how to enter this Settings mode. The LED Parameter adjustment affects the Levels Meters on the Z2. Turning the left **LOOP (SIZE)** encoder another notch calls up the LED Meter Parameters, which is shown by "LEd" in the left LED display. There are no sub-parameters, so the right LED display shows the current meter mode. The options are:

- **Main Out:** This is shown with "OUt" on the right LED display. When this option is activated, the Meters show the sum Main Out level
- **C and D:** The right LED display shows "C_d", meaning that the left meter shows the mono-summed level of Deck C and the right meter shows the mono-summed level of Deck D.

Layout Parameters

See the Settings button's description above to see how to enter this Settings mode. The third parameter category is "Layouts" and is represented by "LAY" in the left display. Use the right LED side to select different TRAKTOR layouts on your computer screen using the **LOOP (SIZE)** encoder. The right display shows the number corresponding to the selected layout. You go up or down the list of layouts by turning the right **LOOP (SIZE)** encoder to the left (counterclockwise) or to the right (clockwise).



You can customize layouts in the [Layout Manager](#) tab of the TRAKTOR Preferences.

5.4.15 BROWSE and LOAD Controls

You can browse and load your tracks directly from the Z2 mixer with the **BROWSE** encoder and the **LOAD (DUPLICATE)** buttons.

BROWSE Encoder



The BROWSE encoder with the LOAD (DUPLICATE) buttons below.

Use the **BROWSE** encoder to select the next song to be loaded into a Deck from TRAKTOR's Library. Used with the **SHIFT** button, the **BROWSE** encoder has a number of functions which are summarized in the following table:

ACTION	RESULT
Rotate encoder	Move the selection highlight up (counterclockwise) and down (clockwise) in the File List
Press and rotate encoder	Scroll in the File List by increments of ten
Press and release encoder (without turning)	Enter/exit Browse mode (full screen browsing)
Hold SHIFT and rotate encoder	Move the selection highlight up (counterclockwise) or down (clockwise) through the Browser Tree
Hold SHIFT and press encoder	Expand or collapse the currently selected Browser Tree branch
Hold SHIFT and press and rotate encoder	Scroll the Browser Tree in increments of ten

LOAD (DUPLICATE) Buttons



The LOAD (DUPLICATE) buttons with the BROWSE encoder above.

Pushing one of the **LOAD (DUPLICATE)** buttons (**A** or **B**) loads the selected track into the corresponding Deck.

Like the **BROWSE** encoder, the **LOAD (DUPLICATE)** buttons have a secondary function — duplicating a Deck's content. When you press and hold **SHIFT** and then push one of the **LOAD (DUPLICATE)** buttons, you will duplicate the content from the opposite Deck. For example, if you press **SHIFT** and the "**B**" **LOAD (DUPLICATE)** button, the track and its transport data (whether or not it is playing, looped, etc.) from Deck A will be duplicated to Deck B.

5.4.16 Headphone and Cue Control Area



The headphone control area on the Z2.

- **HP VOLUME** (headphone volume) knob: Use this knob to adjust the headphone volume level on your Z2. This knob controls both the hard-wired headphone volume in the Z2 and the headphone volume knob on the TRAKTOR software. Headphone volume output is off when the knob is turned all the way to the left and it is at its fullest when the knob is turned all the way to the right.
- **CUE MIX** (headphone cue mix) knob: This knob directly adjusts the cue mix. When it is turned all the way to the left, the headphones will output the cue channel only. When the knob is all the way to the right, it will output the master signal only. When the knob is at the center position, the headphones will receive a blend of both output busses. Fading between the two positions will mix between the two signals.
- **A** and **B** (headphone channel cue) buttons: The two headphone cue buttons are located just below the **CUE MIX** knob and control the pre-listen monitor function. When on, the channel's audio is sent to the headphone bus so that you can monitor it. Pressing either of these buttons toggles the pre-listen monitor function on and off on Decks A or B. If you hold **SHIFT** while pressing either button, you can toggle this function on and off on Decks C or D.

5.4.17 REL / INTL Buttons A and B



The Play mode buttons on the Z2.

If you are using Timecode records or CDs to control TRAKTOR, pressing either of the **REL / INTL** buttons toggles the mode of the respective Deck between being controlled by the Timecode medium (Scratch Control) and Internal Playback, where the timecode medium is being ignored by TRAKTOR.

You can also start or stop Deck A or B by pressing **SHIFT** + **REL / INTL**; this will also automatically enable Internal Playback mode.



When you press **SHIFT** + **REL / INTL**, the associated Deck will be forced into Internal Playback mode (regardless of the previous state) and the Deck will start playing if previously stopped and will stop playing if previously playing.

The **REL / INTL** buttons indicate their state with colored LEDs:

- **Green** indicates Internal Playback mode, where the TRAKTOR software is controlling Deck playback.
- **Orange** indicates Relative (or Absolute) modes, where an external Timecode record or CD is controlling the Deck playback.

5.4.18 SYNC Buttons A and B



The Sync buttons A and B.

The **SYNC** buttons toggle the Deck's Sync function on or off. When Sync is on, the button will light up (Orange LED). If the Deck is in a half-sync state (e.g., with a half-lit **SYNC** button on the TRAKTOR software), the button will be dimly lit.

If you hold **SHIFT**+**SYNC A** or **B** for more than one second, the beat grid from the opposite Track Deck will be applied to the associated Deck. For example if you press and hold the **SHIFT** button and the **SYNC "B"** button, the beat grid from the track in Deck A will be copied onto the track in Deck B.

Pressing the **SYNC** button (without **SHIFT**) for more than one second will reset the associated Deck's tempo (i.e., it will return to it's original tempo with 0% pitch adjust).

5.4.19 SHIFT Button



The SHIFT button on the Z2's top panel.

The **SHIFT** button acts as a modifier (just like pressing [Shift] on a computer keyboard) and enables controls to perform secondary functions. Secondary functions are listed along with the primary function descriptions in this TRAKTOR KONTROL Z2 User Manual.

5.4.20 Level Meters



The level meters in between the volume faders on the top panel.

The Z2's level meters are located right above the crossfader. In their factory default setting, they show the left/right master output ("MST" on the Z2) and the mono-summed levels of Decks A and B.

By changing the mixer settings (see [↑5.4.13, Status/Mode Indicators](#)) you can set the display to indicate the levels of Decks C and D instead of the master output.

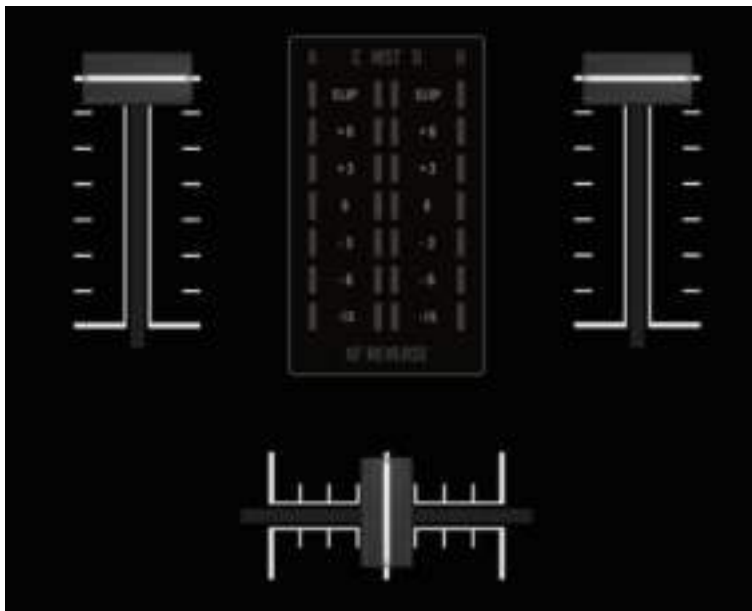
Crossfader Reverse Indicator

The **XF REVERSE** indicator lights up at the bottom of the levels display when the **XF REVERSE** switch is activated (on the front panel of the Z2, see also [↑5.3, Front Panel](#)).



Crossfader Reverse only affects a channel in Direct mode. Refer to the TRAKTOR Manual for further information on Direct mode.

5.4.21 Volume Faders And Crossfader



The volume faders and the crossfader.

Channel Volume

The channel volume faders control the volume of the associated channel.



The channel volume faders control Decks A and B — to adjust the volume on Decks C and D, use the Deck (C and D) volume knobs. See [↑5.4.3, DECK C and DECK D Knobs](#).

Crossfader

The crossfader lets you mix between two channels. Note that if the channel faders are turned up in all four Decks, you will be able to crossfade between any two sets of Decks. See the TRAKTOR manual for more details.

Crossfader reverse: On the front panel of the Z2, the **XF REVERSE** switch lets you reverse the crossfader direction. When on, the Level Meter will also display **XF REVERSE**.



Crossfader reverse only works with internal Z2 mixing, not when you are mixing in TRAKTOR mode.

5.4.22 OUTPUT Section



The OUTPUT section on the Z2.

- **MASTER** volume knob: The **MASTER** volume knob adjusts the volume of the Z2's **MAIN/MASTER** outputs located on the Z2's rear panel.
- **BOOTH** volume knob: The **BOOTH** volume knob adjusts the volume of the **BOOTH** outputs located on the Z2's rear panel.

6 Appendix

6.1 The Z2's Preferences In TRAKTOR

The TRAKTOR preferences have a section dedicated to your TRAKTOR KONTROL Z2 when it is connected. Open the TRAKTOR preferences either by clicking the cogwheel symbol in the software's upper right corner, or via *File > Preferences... > Traktor Kontrol Z2*.



The TRAKTOR KONTROL Z2 preferences section in the TRAKTOR preferences.

There are five areas with Z2 specific settings here: [Mic/Aux Input](#), [Secondary Cue](#), [Restore Default](#), [Calibration](#), and [LEDs](#). See the following sections for further description:

6.1.1 Mic/Aux Input



The Mic/Aux Input area in the Z2 preferences.

Activate the [Route mic/aux input through TRAKTOR](#) option to route signals connected to this section on the back of the Z2 through TRAKTOR instead of sending it directly to the Z2's outputs.

6.1.2 Secondary Cue



The Secondary Cue area in the Z2 preferences.

Assign alternative secondary controls to the Cue/Sample Trigger buttons here. See [↑6.4, Cue/Sample Trigger Buttons: Optional Secondary Functions for Track Decks](#) and [↑6.5, Cue/Sample Trigger Buttons: Optional Secondary Functions for Remix Decks](#) for further description.

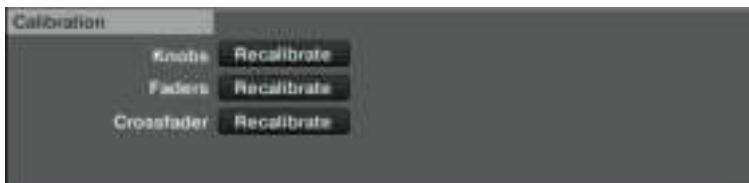
6.1.3 Restore Default



The Restore Default area in the Z2 preferences.

Clicking this button restores all Z2 settings to the factory settings.

6.1.4 Calibration



The Calibration area in the Z2 preferences.

Use these controls if your Z2's controls appear to have decalibrated. Pressing one of the buttons will recalibrate the relevant mixer controls.

6.1.5 LEDs



The LEDs area in the Z2 preferences.

Set the Z2's LEDs [On State Brightness](#) and [Dim State Percentage](#) with these sliders.

6.2 The Z2 Audio Interface And Control Panel

Your TRAKTOR KONTROL Z2 is equipped with a high-end audio interface. You can adjust the audio interface settings to your needs and computer performance.

Depending on whether you work on Windows or Mac OS X, you can adjust these settings in different ways.

6.2.1 Settings on Mac OS X

On Mac OS X, you can adjust the settings for the Z2 audio interface from within each music application. In TRAKTOR:

- Open *Preferences > Audio Setup* to access the settings for the Z2 audio interface.

There, you can adjust the audio interface settings of the TRAKTOR KONTROL Z2. You have two settings:

- **Sample Rate:** The Sample Rate is fixed to 48000 Hz for the TRAKTOR KONTROL Z2's audio interface.



The sample rate defines how many samples are played/recorded per one second of sound. A higher sample rate results in higher audio quality; however, 44100 Hz (as used for recording audio CDs) is a common setting and absolutely sufficient for most tasks. If your final destination is CD you should use this setting or a multiple of it (88200 Hz). For a better understanding: 48000 Hz is used by DAT recorders, and for DVD (films) recording. 96000 Hz is typical for DVD, HD DVD, and Blue-ray Disc audio recording. You should be aware that a higher sample rate also causes higher CPU load.

- **Latency :** Lower the latency value for a quicker response of your computer to TRAKTOR controller and software actions.



When converting audio information to digital and vice versa, the audio driver needs to store the data in buffer packages (audio buffers) which are then sent to and processed by the CPU. The higher the buffer size, the longer it takes for a signal to finally arrive at the output as audio. You might experience this as late response in between hitting a key on a controller which controls music software on your computer, and hearing sound at the output. This delay is called latency. You should start off with a higher latency value, and gradually decrease it until you find the perfect balance between playability and audio quality for your system. If you experience crackling at the audio output, the latency value is very likely to be too low for your computer's CPU to cope with, as lower latency values cause a higher load on the CPU.

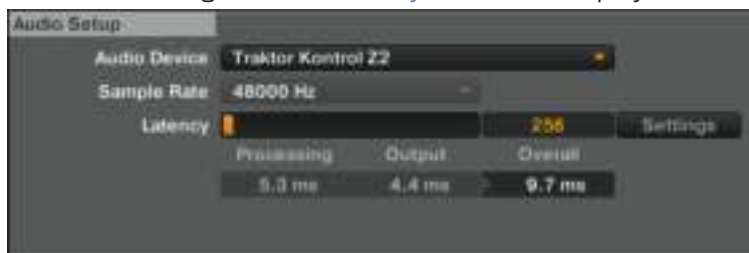
6.2.2 Settings on Windows: The Control Panel

On Windows, the settings for the TRAKTOR KONTROL Z2 audio interface are accessed via a tool called Control Panel. The Control Panel was installed together with the drivers for your Z2 during the TRAKTOR installation procedure. This section describes the Control Panel user interface.

Opening the Control Panel

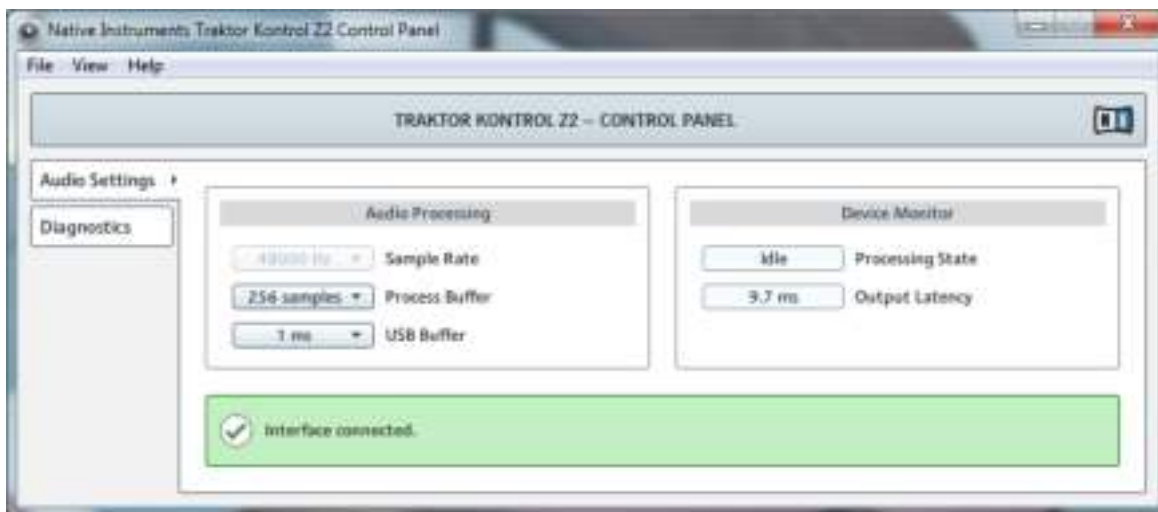
You can open the Control Panel in various ways:

- From within TRAKTOR: Go to *Preferences > Audio Setup* and click the [Settings](#) button, located at the right of the [Latency](#) slider and display:



- From your desktop: Go to *Start > Programs > Native Instruments > Traktor Kontrol Z2 > Traktor Kontrol Z2 Control Panel*.

If you cannot find the Control Panel, the driver is most likely not installed at all. In this case, please re-install the driver as described in the separate Setup Guide. Here is what you get when opening the Control Panel:



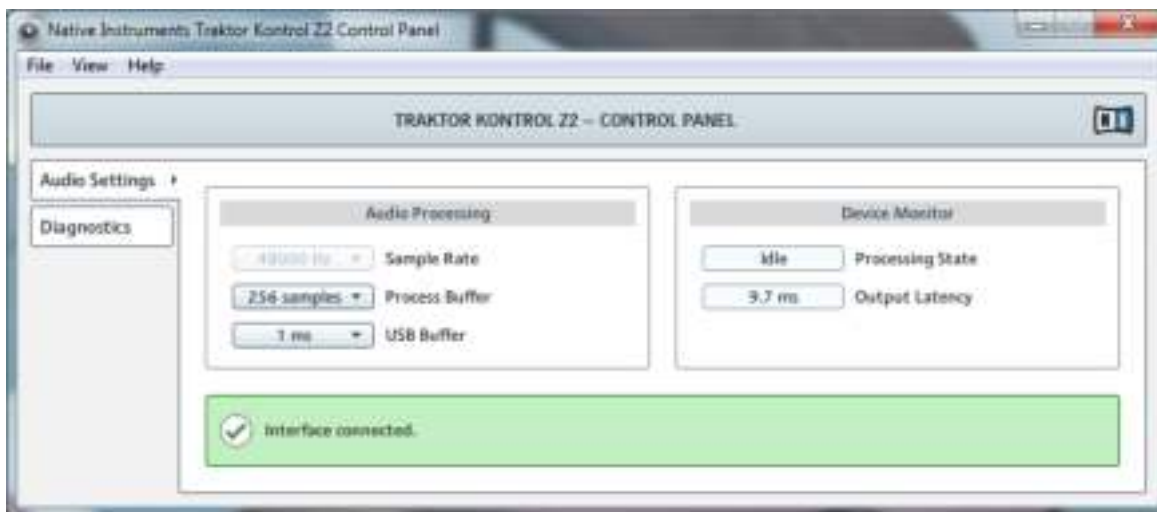
The Control Panel.

On the left side, you find two tabs: [Audio Settings](#) and [Diagnostics](#).

- Click on the tabs at the left to open the corresponding page of the Control Panel.

Audio Settings Page

The [Audio Settings](#) page allows you to adjust the settings of the audio interface.



The Control Panel with Audio Settings page opened

- **Sample Rate:** The Sample Rate is fixed to 48000 Hz for the TRAKTOR KONTROL Z2's audio interface.



The sample rate defines how many samples are played/recorded per one second of sound. A higher sample rate results in higher audio quality; however, 44100 Hz (as used for recording audio CDs) is a common setting and absolutely sufficient for most tasks. If your final destination is CD you should use this setting or a multiple of it (88200 Hz). For a better understanding: 48000 Hz is used by DAT recorders, and for DVD (films) recording. 96000 Hz is typical for DVD, HD DVD, and Blue-ray Disc audio recording. You should be aware that a higher sample rate also causes higher CPU load.

- **Process Buffer:** Lower the buffer size value for a quicker response of your computer to TRAKTOR controller and software actions.



When converting audio information to digital and vice versa, the audio driver needs to store the data in buffer packages (audio buffers) which are then sent to and processed by the CPU. The higher the buffer size, the longer it takes for a signal to finally arrive at the output as audio. You might experience this as late response in between hitting a key on a controller which controls music software on your computer, and hearing sound at the output. This delay is called latency. A rule of thumb is: lower buffer size results in lower latency. However, there are more factors to latency than buffer size alone (e.g., CPU speed and RAM size). You should start off with a higher buffer size setting, and gradually decrease the value until you find the perfect balance between playability and audio quality for your system. If you experience crackling at the audio output, the buffer size is very likely to be too low for your computer's CPU to cope with, as lower buffer size causes higher CPU load.

- **USB Buffer:** Use this menu in case you cannot achieve satisfactory Latency settings with the Process Buffer menu. Lower the USB buffer size for smaller USB buffer packaging, which should further reduce the audible latency. If you notice any audio interruptions, you should raise the buffer size until you have a clear sound, free of dropouts.
- **Processing State :** The processing state monitor provides feedback on the current status of the device. There are three possible status messages:
 - **Idle:** controller is connected, but no audio data is being streamed.
 - **Streaming:** driver is working and processing audio data.
 - **Panic:** driver stopped streaming. Too many USB I/O errors occurred in the interface communication.
- **Output Latency :** displays your system's output latency in milliseconds.

Notice there is also an input latency when working with the TRAKTOR KONTROL Z2. The output latency value does not represent the overall latency, from pressing a button on the controller to hearing the resulting effect at the output. The overall latency is about twice as long as the output latency.

Diagnostics Page

The [Diagnostics](#) page allows for monitoring the Z2's performance and for detecting errors.



The Control Panel with Diagnostics page opened

The information provided in the [Diagnostics](#) page might be more of interest to advanced users; however, in case of problems, you should always have a look at this page.

- **USB I/O Errors:** counts USB input/output errors. A high **USB I/O Errors** count points to your system being overloaded.
- **Buffer Underruns:** Buffer underruns occur when your computer isn't able to process an audio buffer in time. Reasons for underruns can be too many ongoing background tasks or high CPU usage within a music program that uses the device as audio driver.
- **Reset:** A click on this button resets the error count.

- **Number of Clients:** displays the number of clients connected to the interface. Multiple ASIO applications are counted separately, WDM and WASAPI increase the number by one, no matter how many WDM/WASAPI applications play audio.
- **USB Data Errors:** counts USB data errors. Poor quality or long cables as well as irradiation can be the source of data errors on the USB bus.
- **Reset:** A click on this button resets the error count.
- **Driver Version:** See the currently installed driver version here.
- **Firmware Version:** See the currently installed firmware version here.
- **Troubleshooting Guide:** Click [Show](#) to open the Troubleshooting Guide.

6.3 Cue/Sample LED Color Illumination

The illumination of the Cue/Sample Trigger buttons depends on the underlying Deck Flavor:

For Track Decks

The Cue/Sample Trigger buttons light up according to the following scheme for Track Decks:

- **Light Blue:** HotCue
- **Green:** Loop
- **Orange:** Fade-In and Fade-Out Markers
- **White:** Grid Marker

For Remix Decks

For Remix Decks, the LEDs light up according to the color and playback state of the associated active cell in the Remix Deck.

6.4 Cue/Sample Trigger Buttons: Optional Secondary Functions for Track Decks

By pressing **SHIFT** and a Deck Focus button (see also [↑5.4.5, Cue/Sample Trigger Section \(1, 2, 3, 4\)](#)), you enter the secondary mode for the Cue/Sample Trigger buttons. The Deck Focus button then blinks to indicate that it is in secondary mode.

For a general description of the Cue/Sample Trigger buttons, also refer to [↑5.4.5, Cue/Sample Trigger Section \(1, 2, 3, 4\)](#).

You can determine what the secondary function will be in the TRAKTOR preferences (in the TRAKTOR KONTROL Z2 tab, under [Secondary Cue](#)).



The Z2's preferences in TRAKTOR.

The following options are available for Track Decks:

HotCues 5-8

This is the default setting. The buttons will be illuminated according to the type of Cue assigned to the button (just like in the primary mode).

Button Color	Function
Blue	HotCue
Green	Loop
Yellow	Load
Orange	Fade in/out
White	Grid
Off	No marker assigned
Brightly lit	Active HotCue

BeatJumps

Button	Function
Button 1	Forward one beat
Button 2	Back one beat
Button 3	Forward by Auto-Loop size
Button 4	Back by Auto-Loop size

All buttons are lit up orange in this mode; when you hold the button, it will light up more brightly.

Direct Loops Large

Button	Function
Button 1	1 beat loop
Button 2	2 beat loop
Button 3	8 beat loop
Button 4	16 beat loop

All buttons will be illuminated green in this mode where the active button is shown in bright green.

Direct Loops Micro

Button	Function
Button 1	1/2 beat loop
Button 2	1/4 beat loop
Button 3	1/8 beat loop
Button 4	1/16 beat loop

All buttons light up green in this mode; active button is bright green.

Manual Loops

Button	Function
Button 1	Loop in
Button 2	Loop out
Button 3	Loop active
Button 4	4 beat direct loop

All buttons light up green in this mode; the active button is bright green.

6.5 Cue/Sample Trigger Buttons: Optional Secondary Functions for Remix Decks

By pressing **SHIFT** and a Deck Focus button (see also [↑5.4.5, Cue/Sample Trigger Section \(1, 2, 3, 4\)](#)), you enter the secondary mode for the Cue/Sample Trigger buttons. The Deck Focus button then blinks to indicate that it is in secondary mode.

For a general description of the Cue/Sample Trigger buttons, also refer to [↑5.4.5, Cue/Sample Trigger Section \(1, 2, 3, 4\)](#).

You can determine what the secondary function will be in the TRAKTOR preferences (in the TRAKTOR KONTROL Z2 tab, under [Secondary Cue](#)).



The Z2's preferences in TRAKTOR.

The following options are available for Remix Decks:

Sample Retrigger

This is the default setting. All buttons light up according to the associated sample colors. The buttons are bright when the sample is playing, dim when the sample is stopped or muted, and dark when no sample is loaded.

Loop Recorder Controls

Button	Function
Button 1	Size (LED is blue)
Button 2	Undo (LED is blue)
Button 3	Record (LED is red)
Button 4	Play (LED is green)

The LEDs are brightly lit when the buttons are active.

6.6 Virtual USB I/O Routing

A word on the routing of the virtual USB channels in the software.

USB Outputs

- **USB OUT 1/2:** This signal is fed directly to the Main bus of the Z2 mixer. This signal goes straight to the XLR/TRS/RCA outputs (via their **VOLUME** knobs) and to the headphones when the **CUE MIX** knob is set clockwise. The crossfader and individual volume faders have no affect on this output.
- **USB OUT 3/4:** This signal is fed directly to the headphones and requires that the **CUE MIX** knob is counter-clockwise in order to hear.

USB Inputs

- **USB IN 1/2:** This is the mic/aux signal.
- **USB IN 3/4:** This is the Channel A Phono or Line Input (depending on the position of the PH/LN switch).
- **USB IN 5/6:** This is the Channel B Phono or Line Input (depending on the position of the PH/LN switch).
- **USB IN 7/8:** This is the output of the entire mixer routed back to the computer for the purpose of recording.

Index

A

ACT (MOVE) encoder [\[44\]](#)

Audio settings [\[68\]](#)

AUX / MIC controls [\[40\]](#)

AUX / MIC input section [\[36\]](#)

B

Beatjumping [\[23\]](#)

Booth outputs [\[34\]](#)

BROWSE encoder [\[57\]](#)

Browsing [\[18\]](#) [\[57\]](#)

C

Cinch connectors [\[34\]](#)

Compatibility issues [\[12\]](#)

Crackles [\[69\]](#) [\[72\]](#)

Crossfader

changing curve type [\[39\]](#)

inverting [\[38\]](#)

Cue [\[60\]](#)

Cue mix [\[22\]](#)

Cue points

setting [\[24\]](#) [\[47\]](#)

working with [\[24\]](#) [\[47\]](#)

Cue/Sample Trigger buttons [\[47\]](#)

Customizing [\[30\]](#)

D

DECK C knob [\[43\]](#)

DECK D knob [\[43\]](#)

Deck Flavor

change [\[51\]](#)

Deck focus

changing [\[24\]](#)

Deck focus buttons [\[45\]](#)

Displays [\[44\]](#)

Documentation

Controller Editor Manual [\[11\]](#)

Manual [\[10\]](#)

Overview [\[10\]](#)

Setup Guide [\[10\]](#)

TRAKTOR Manual [\[10\]](#)

Drop-outs [\[69\]](#) [\[72\]](#)

Duplicating Decks [\[19\]](#)

E

Effects

activating [\[54\]](#)

EQ [\[52\]](#)

F

Filter [\[52\]](#)

FLUX (TAP) button [\[49\]](#)

Flux mode [\[27\]](#)

FX

activating [\[54\]](#)

FX buttons [\[54\]](#)

G

Gain

adjusting [\[21\]](#)

GAIN knobs [\[51\]](#)

GND [\[37\]](#)

Ground wires [\[37\]](#)

H

Headphones [\[38\]](#) [\[60\]](#)

I

Input section [\[35\]](#)

Internal Playback [\[60\]](#)

Internal Playback mode [\[19\]](#)

L

Latency [\[68\]](#) [\[69\]](#)

Level meters [\[62\]](#)

Line amplification [\[50\]](#)

LOAD buttons [\[57\]](#)

Loading [\[18\]](#) [\[57\]](#)

LOOP (SIZE) encoder [\[44\]](#)

Loops

creating [\[23\]](#) [\[25\]](#)

moving [\[23\]](#) [\[25\]](#)

saving to Cue/Sample Trigger buttons [\[25\]](#)

setting [\[23\]](#) [\[25\]](#) [\[47\]](#)

working with [\[47\]](#)

M

Macro FX [\[29\]](#)

MACRO FX controls [\[41\]](#)

Microphone

connecting [\[15\]](#)

O

Operation modes

Direct mode [\[13\]](#) [\[50\]](#)

TRAKTOR mode [\[17\]](#) [\[50\]](#)

Output Latency [\[73\]](#)

P

Parameters

changing [\[56\]](#)

PH - LN [\[50\]](#)

PHONES section [\[38\]](#)

Phono amplification [\[50\]](#)

Power requirements [\[12\]](#)

Pre-listen [\[60\]](#)

Pre-listening [\[22\]](#)

Previewing [\[22\]](#)

Processing State (Control Panel) [\[73\]](#)

Q

Q button [\[56\]](#)

Quantize [\[56\]](#)

R

RCA connectors [\[34\]](#)

REL / INTL [\[60\]](#)

Remix Decks

controlling [\[26\]](#)

S

S button [\[56\]](#)

Sample Rate [\[68\]](#)

Sample Slots

 triggering [\[26\]](#)

 working with [\[47\]](#)

Scratch control [\[60\]](#)

SHIFT button [\[61\]](#)

Snap [\[56\]](#)

Stand-alone operation [\[13\]](#)

Start/stop [\[19\]](#)

Sync [\[61\]](#)

SYNC buttons [\[61\]](#)

System requirements [\[12\]](#)

T

Tempo Master [\[20\]](#)

Timecode modes [\[19\]](#)

X

XF CURVE [\[39\]](#)

XF REVERSE [\[38\]](#)

XLR connectors [\[34\]](#)