

XONE:K1 Driver Installation & Release Notes (PC)

ALLEN&HEATH
SOFTWARE

XONE:K1

This is the initial release driver for the XONE:K1

Driver (PC) **v2.20.42**

Supported OS:

Windows 8 (32 & 64 Bit)

Windows 7 (32 & 64 Bit)

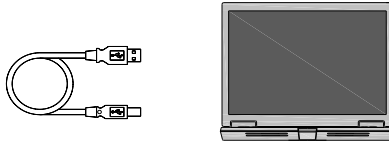
K1 Driver & Firmware Known issues:

- Bug ID:7—K1 will only receive MIDI if you power up a computer with the device connected. To resolve the issue unplug and re-plug the USB cable
- Bug ID:9—Only upto 2 K1 devices can be seen on OSX Lion
- Bug ID:2— Sending bulk MIDI data can cause MIDI messages to be dropped

Please continue to Page 2 for installation instructions

DRIVER INSTALLATION (PC)

Connect the XONE:K1 to your computer using the supplied type A-B USB Lead.



Drivers

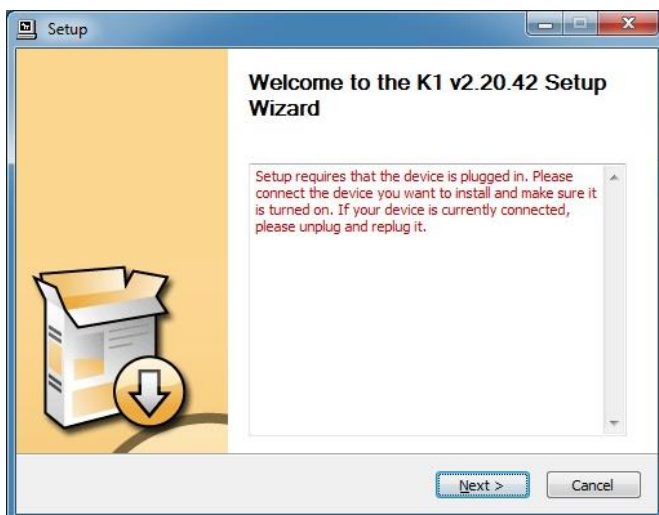
Whilst the XONE:K1 is class compliant on a PC and connects as a MIDI device, in order to utilize multiple Xone:K1 devices via the USB connection with more than one application at a time, you are required to install a dedicated Windows Driver.

The Windows Driver can be downloaded from our web-site:

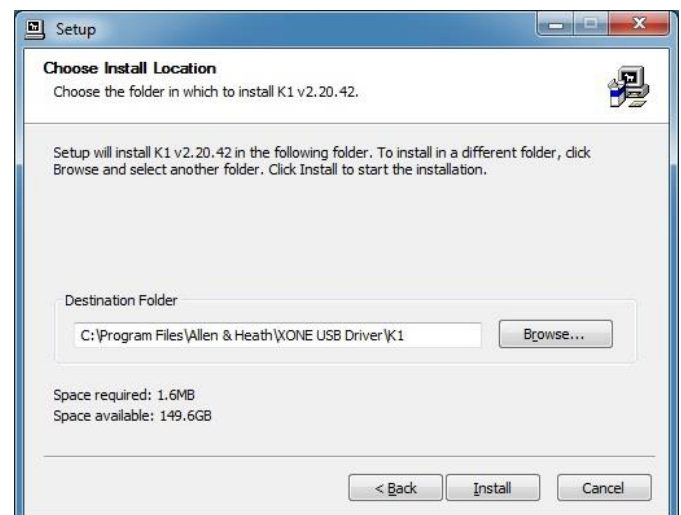
www.allen-heath.com

When the driver has downloaded, extract to a folder and click on the setup file to start installation.

Click Next to continue.

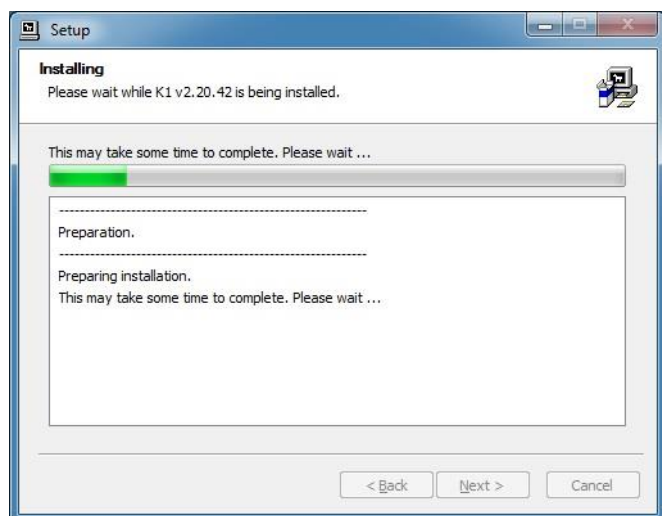


Connect the Xone:K1 via USB to the computer.

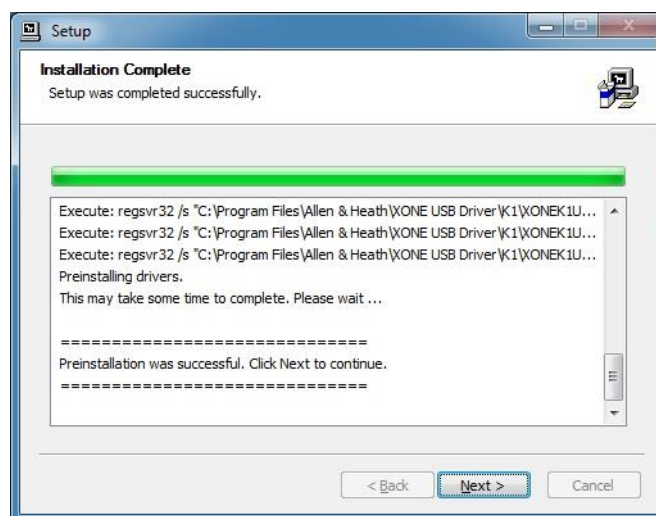


Choose your install location, and select Install.

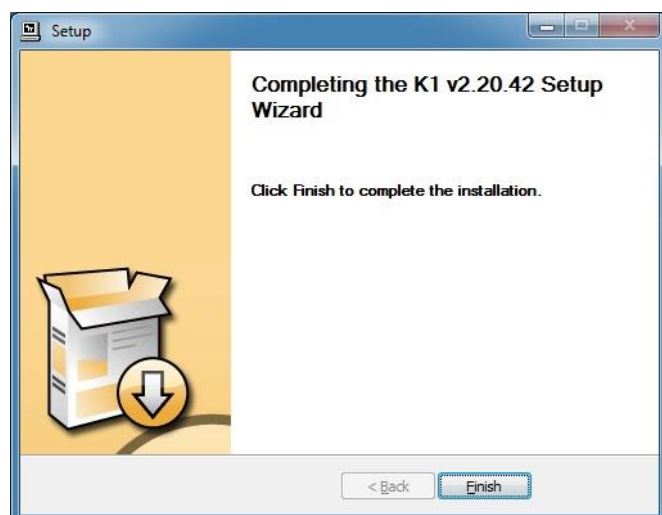
DRIVER INSTALLATION (PC)



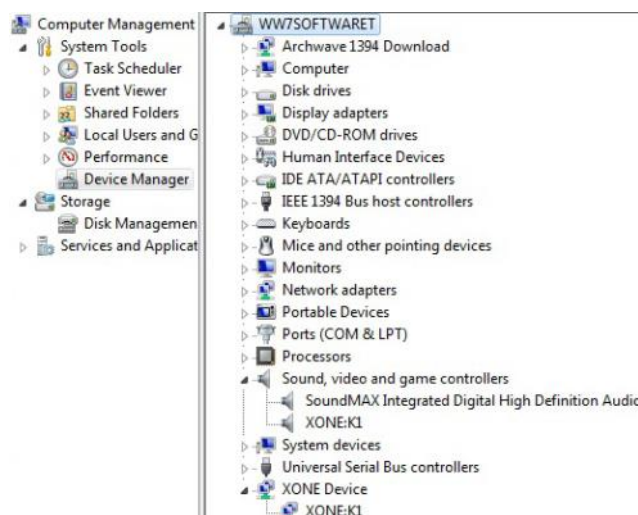
Installation will now start. Do Not unplug your Xone:K1 device.



Once installation is complete, select Next.



Select Finish to complete the installation.



Load “Device Manager” by clicking Start > Control Panel > System > Device Manager.

In the device list expand “Sound, video and game controllers” and confirm “XONE:K1” is listed.

If you have any problems installing these updates, please contact **A&H Product Support**

<http://www.allen-heath.com/Support/>